

Stage IV Melanoma Treatment Options

Making the Decision That's Right for You



TABLE OF CONTENTS

INTRODUCTION	1
OVERVIEW OF STAGE IV MELANOMA	2
TREATMENT PLANNING FOR STAGE IV MELANOMA	3
Testing	4
Disease Factors for Decision Making.....	6
Patient Factors for Decision Making	7
Weighing All the Factors	8
THERAPEUTIC OPTIONS FOR STAGE IV MELANOMA	10
Overview of Therapies	10
How Well Systemic Therapies Work	19
Side Effects of Stage IV Systemic Therapies	32
How the Drugs Are Given	41
Financial/Access Issues	43
Pregnancy, Fertility, and Family Planning	44
SHARED DECISION MAKING	46
SURVIVORSHIP AND ADVANCED CARE PLANNING	49
MY RESOURCES	50
INFORMATION RESOURCES	51
IN-DEPTH READING FROM THE SCIENTIFIC LITERATURE	52
ACKNOWLEDGMENTS	54
APPENDIX: DIAGNOSING AND MONITORING STAGE IV MELANOMA	55
Clinical Signs of Stage IV Disease	55
Imaging	56
Biopsy	58



INTRODUCTION

If you are reading this booklet, likely you (or someone you love) has been diagnosed with Stage IV melanoma or is being evaluated for it.* Stage IV is advanced melanoma, meaning it has spread from its original site to a distant location in the body. While this diagnosis can be overwhelming, it is important to know that Stage IV melanoma does not mean “end-stage melanoma.” Fortunately, in the last 10 to 15 years, we have come a long way in treating this stage of melanoma. There are now several effective treatments available, and many more are being investigated. Patients with Stage IV melanoma can live long, productive lives because of these advances.

This document is designed to help you and your oncology team evaluate treatment options and identify the different considerations you care about in deciding your treatment course. Using this guide, you and your team can weigh the options to make the decision that is right for you.

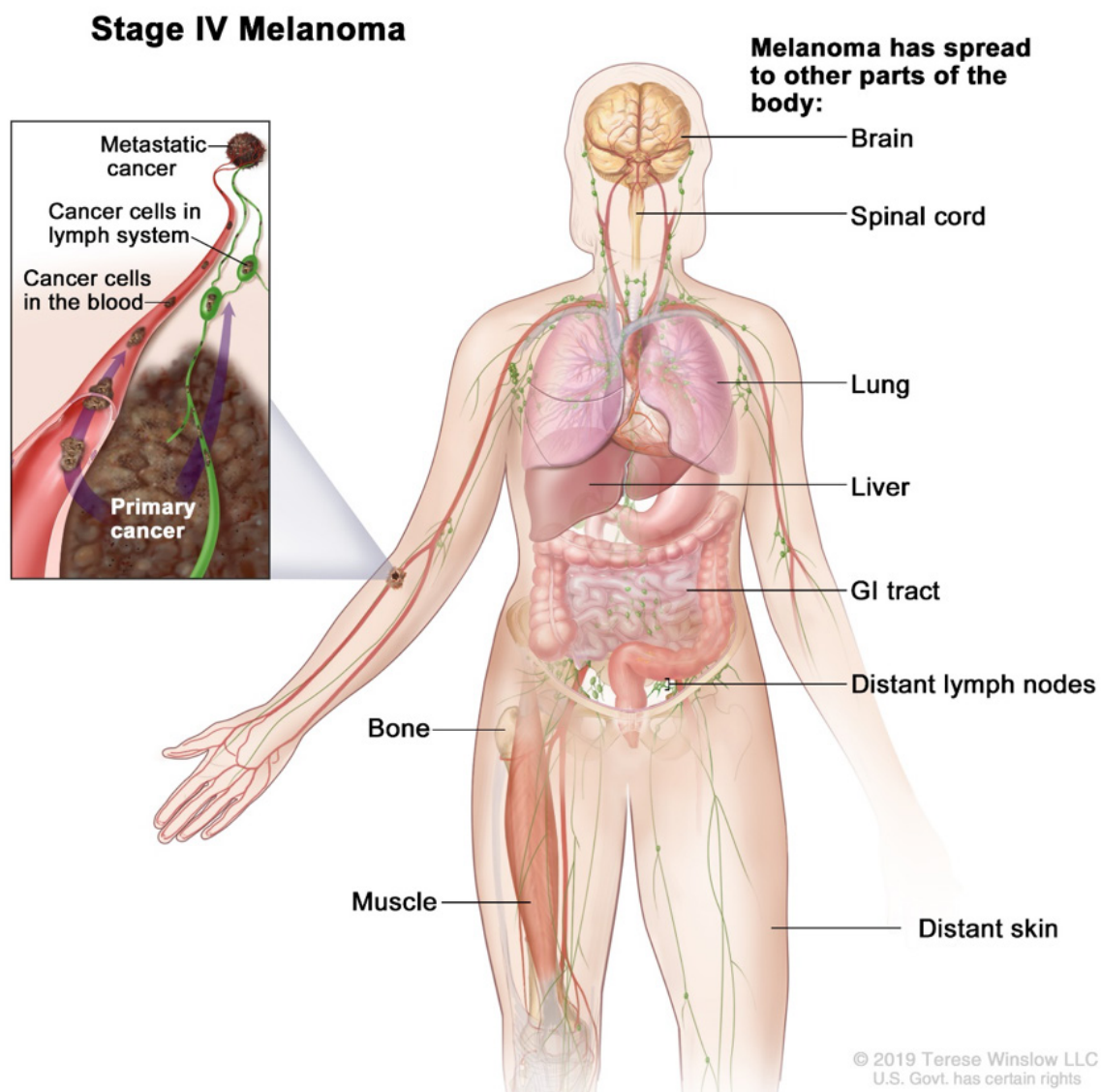
For people who have already been diagnosed with Stage IV melanoma, we recommend that you begin your review at the beginning of this document, which starts with treatment planning. If you are still being evaluated for Stage IV melanoma (and want to learn more about imaging and biopsy techniques) we suggest that you first go to the Appendix entitled **DIAGNOSING AND MONITORING STAGE IV MELANOMA**. This backgrounder provides detail about the tests you will undergo to arrive at a diagnosis.



*This document has been developed to support decision making for Stage IV cutaneous melanoma, specifically the type that occurs on sun-exposed skin. There are other types of melanoma—ocular, mucosal, and acral lentiginous—that are not discussed here. For more information about these other types of melanoma and their treatment, please see <https://www.aimatmelanoma.org/melanoma-101/types-of-melanoma/>.

OVERVIEW OF STAGE IV MELANOMA

Stage IV melanoma is melanoma that has spread (**metastasized**) to sites away from the spot where it first started (the **primary melanoma**). As shown in Graphic 1, these distant sites can include the lung, liver, brain, bone, or even the skin or lymph nodes far away from the primary (original) site of the melanoma. By contrast, Stage III melanoma means the cancer has spread only to the closest lymph nodes or the skin region right around the primary melanoma.



Graphic 1. Visual representation of Stage IV melanoma. Adapted with permission from Terese Winslow.

TREATMENT PLANNING FOR STAGE IV DISEASE

Below is a discussion of some of the tests and other factors that will be considered in making your treatment plan. This guide will assist you and your healthcare team in assessing these factors so that, together, you can make the decision that is best for you.

TESTING

To evaluate Stage IV melanoma, your oncology team will order a series of pathology or laboratory tests, some on the tumor, others on blood. The tumor is sampled through a biopsy. You will most likely also undergo some imaging scans. The details of different types of biopsies and the imaging scans are discussed in the Appendix.

Some of the tests your oncology team will order are checking for **biomarkers**, which are substances in your tissue, blood, body fluid, or the tumor itself that tell us key information about your cancer. A biomarker might tell us how aggressive your cancer is, whether it will respond to a specific therapy, or how your body is responding to the presence of the cancer. We discuss some key melanoma biomarkers below.

KEY CONSIDERATION

Take charge of your health. You will most likely be very busy undergoing pathology, laboratory, and imaging tests during your evaluation for Stage IV melanoma. When you sit down with your oncologist to make treatment decisions, it's best to have as many of your test results available as possible. **At the very least, make sure your oncologist has the results of the *BRAF* testing, because that is key to knowing all of your treatment options.** The details of the *BRAF* test are described in the text on the next page.



Pathology Tests on the Tumor

When the tumor from the biopsy gets to the pathology laboratory, the pathologist will run specific tests on the tumor tissue to learn more about it.

BRAF

One of the most important tumor biomarker tests the pathologist will conduct is the test for the *BRAF* mutation. *BRAF* (pronounced “Bee-Raf”) is a gene that makes a protein called BRAF, which is involved in sending signals in cells and in cell growth. Everyone has this gene in their normal body cells, but some tumors carry a mutated (or changed) form of *BRAF*. When *BRAF* is altered, it changes how the melanoma grows. About half of all cutaneous melanomas from sun-exposed skin carry this mutation. These melanomas are called *BRAF* positive. Melanomas that don’t have this mutation are called wild-type or *BRAF* negative. If a *BRAF* mutation is found, it does not mean your melanoma is genetically inherited or that you are at risk of passing along a melanoma susceptibility gene related to *BRAF* to first-degree relatives, like children. It simply means there is an abnormal protein in your melanoma cells.

It is important to make sure your oncology team has obtained your *BRAF* testing as soon as possible, since this will help determine which therapy options are available to you. *BRAF* testing is strongly recommended for all patients with Stage III and Stage IV melanoma, so you may have already had your tumor tested. If not, you should speak with your oncologist about getting the *BRAF* test done. Currently, *BRAF* testing requires tumor tissue. Your oncologist’s office will see what tumor tissue is available to test. DNA will be extracted from the tissue to look for the mutation. To ensure an adequately sized sample, additional biopsies may be necessary.

PD-L1

If you are taking part in a clinical trial, your oncologist may have you take a test to measure your programmed death ligand 1 (PD-L1) levels. PD-L1 is what is called an immune checkpoint—a protein that acts to “put the brakes on” the immune system—which can allow cancer to grow unchecked. Checkpoint inhibitors are a type of immunotherapy drug that “take the brakes off” the immune system so it can fight the cancer. For some cancers, it is important to test for PD-L1 levels in order to see if the checkpoint inhibitor will work. Currently, in everyday practice, the checkpoint inhibitors used in melanoma do not require testing for PD-L1 levels. But as we mentioned, use of PD-L1 levels to guide therapy is being studied in some melanoma clinical trials. You may also hear about this test being required for other types of cancer being treated with checkpoint inhibitors.

Other mutations

Currently, some patients with melanoma are getting a test known as targeted exome sequencing. This test gives their oncologist a readout of hundreds of genes in the tumor, including some rare mutations. Melanomas that contain some of these less common mutations are important to identify because they may be treated differently, as outlined below. Less common mutations include a neurotrophic tropomyosin receptor kinase (NTRK) fusion, which would be treated with a therapy specific to that mutation. Another mutation that the test might find is a mutation in the *c-KIT* gene. *c-KIT* is a protein that is also involved with growth of cancers. *c-KIT* is more commonly mutated in other cancers and in noncutaneous melanomas (like those in the mucous membranes). In cutaneous melanoma, *c-KIT* mutations are more common in melanomas arising in chronically-sun damaged skin. *c-KIT*—mutated melanoma may respond to specific types of therapy described below.

If your oncologist conducts the targeted exome sequencing test, it's helpful to discuss those results and how the information is going to be used to guide treatment. While the test can pick up less common mutations for which there are specific therapies, many times results show different mutations that doctors do not yet know how to treat. So it's important that your team has a plan for how to sift through all the results and best use the information from the test.

Blood Tests

Blood tests will tell your oncology care team about your general health as well as some more specific information about the cancer and how your body is fighting it.

Some biomarkers are tested in the blood. Such tests are often helpful for following your cancer (and your body's response to the cancer) over time.

Lactate dehydrogenase (LDH)

LDH levels in your blood serum may be tested. LDH is a protein that is used to turn sugar into energy to fuel your cells. It is used in different parts of your body. Cancer cells need a lot of this protein because they need a lot of energy, and it helps them survive in low oxygen environments. When cells, such as cancer cells, are damaged, they release LDH into the blood, which is why higher levels of LDH in the blood serum are found when cancer cells are spreading rapidly. LDH levels may be related to the amount of melanoma present. LDH levels have also been associated with outcomes to treatment.

Circulating tumor DNA (ctDNA)

ctDNA levels may also be tested. ctDNA are small pieces of DNA released from tumor cells that make their way into the bloodstream. ctDNA is a sensitive test that helps determine if you have any tumors in your body—even if the tumors are not visible on scans (a state known as no evidence of disease). This remains an experimental test in melanoma and is currently not widely used to guide treatment decisions or monitoring.

DISEASE FACTORS FOR DECISION MAKING

Once your oncology team has gathered the information about your melanoma from the different tests, they will have a clearer picture of what is happening. They will assess a number of items about your disease.

Extent, Pace, and Location of Disease

It's important to recognize that Stage IV melanoma can take many forms. You may have a single metastasis (one site), or you may have metastases in many parts of your body. The extent of the disease affects what treatments are considered. So understanding the extent of the disease is important.

Your oncology team may also look at how quickly the melanoma has spread (the **pace of disease**) based on prior scans and tests as well as how many sites are involved. If the tumor is spreading quickly, your team may recommend a more aggressive approach to treatment.

The **location** of the disease is also important. Some therapies can reach throughout the body but are not effective when there is melanoma in the brain. Others can work effectively in the brain. Sometimes, melanoma spreads to distant sites on the skin and in the lymph nodes and can be cut out or injected with medication, so location is also important to consider when selecting therapy.



PATIENT FACTORS FOR DECISION MAKING

While the above factors have to do with your melanoma, you—your general health and your goals—are also important considerations.

Your Fitness

You and your oncology team will consider your general health in selecting therapy and in evaluating what kind of support you need. Oncologists like to use objective criteria when evaluating fitness. One scale that is used is the Eastern Co-Operative Oncology Group/World Health Organization (ECOG/WHO) system for **performance status**. This system ranks your ability to perform tasks on a scale of 0-5. Graphic 2 shows an overview of the ECOG/WHO performance status scale.

Graphic 2. ECOG/WHO Performance Status.

Performance Status	Description
0	Fully active, no restrictions on activities. A performance status of 0 means no restrictions in the sense that someone is able to do everything they were able to do prior to their diagnosis.
1	Unable to do strenuous activities but able to carry out light housework and sedentary activities. This status basically means you can't do heavy work but can do anything else.
2	Able to walk and manage self-care, but unable to work. Out of bed more than 50% of waking hours. In this category, people are usually unable to carry on any work activities, including light office work.
3	Confined to bed or a chair more than 50% of waking hours. Capable of limited self-care.
4	Completely disabled. Totally confined to a bed or chair. Unable to do any self-care.
5	Death

Your Goals for Therapy

Your oncology team will be working with you to meet your goals for therapy. It's important that you think through how aggressive you want to be in fighting the cancer and how you value that aggressiveness vs the tradeoffs in terms of convenience, quality of life, and other factors that matter to you. Each therapy has its plusses and minuses in terms of how well it works, the side effects, how it is given (and how convenient that is for you), cost, and impact on family planning. These are all points to consider, and the rest of this document provides much more information on these topics.

Beyond the immediate decision making regarding your treatment, you have a lot of other decisions to make about your future. To learn more about this type of planning, see the **SURVIVORSHIP AND ADVANCED CARE PLANNING** section at the end of this document.

WEIGHING ALL THE FACTORS

In order to make decisions about treatment, you and your oncology team will take into consideration all of the factors described above: your scans and test results; the extent, pace and location of your cancer; your overall health; and your goals. Additionally, you and your team will consider what we know about how well each treatment works, the costs, and the side effects. Graphic 3 shows some questions you and your oncology team will consider in this process.



Graphic 3. Factors to consider in the Stage IV decision-making process.

Extent and Location of Disease
How many sites (and which locations) has the tumor spread to? Is it in the brain? Are there tumors in or under the skin or in the lymph nodes that can be injected?
Pace of Disease
Is the disease progressing quickly? Is the cancer causing pain and other symptoms? If so, how bad are these symptoms? Is the cancer making you very sick? What is the LDH level?
Other Tumor Characteristics
What is your <i>BRAF</i> status? Does the tumor carry any rare mutations that could be targeted?
Prior Therapy
Did you receive adjuvant therapy (therapy given after surgical removal to prevent the cancer from coming back)? Have you received therapy before for Stage IV disease? Have you received corticosteroids recently?
Therapy Considerations
How well is a therapy likely to work for you? What are the side effects of the therapy and how well are you likely to tolerate them? How is the therapy administered? What will the therapy cost you?
Personal Considerations
How will the choice of therapy affect your family planning, if that's an important consideration? How convenient is each therapy for you? How much are you willing to trade off in terms of other factors (side effects, etc) for a therapy that works well?

THERAPEUTIC OPTIONS FOR STAGE IV MELANOMA

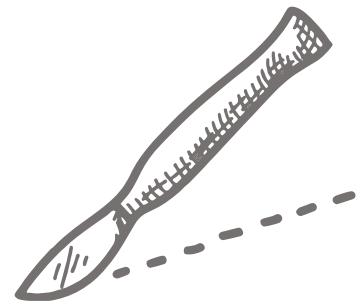
This section starts with an overview of the different types of therapies used to treat Stage IV melanoma. We then drill down in detail on the medications used to treat melanoma: how well they work, their side effects, how they are given, financial and access issues, as well as pregnancy and family-planning considerations. Our goal here is to cover all of these considerations to provide the information you need to support the shared decision-making process.

OVERVIEW OF THERAPIES

In this subsection, we review therapies based on the order in which they are typically considered or offered as options to you: surgery (if possible), medications, and radiotherapy. We then discuss specific therapies for managing brain metastases, since they stand alone. We end with clinical trials, because clinical trials may involve any of these treatment types.

Surgery

In some cases, your cancer may have spread from the primary melanoma to one or just a few sites, and it can be removed surgically. If the visible cancer can be removed entirely, then your status becomes **no evidence of disease (NED)**. But even if the surgery is not able to remove all of the cancer, it can still reduce the amount of tumor in your body (**burden of disease**), which may be helpful. Many of the medications that your oncologist can offer you work better when the burden of disease is low. So surgical management may make sense, if it's possible. Only you and your treatment team can determine if your tumor(s) can be surgically removed safely. Tumors found in the brain are discussed in the section below.

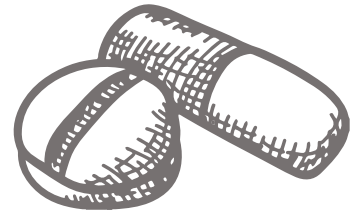


Once the surgery is complete, your team will determine if you are NED. If all of the melanoma has been surgically removed, **adjuvant therapy**, which is therapy provided to prevent the disease from coming back, will be offered. If the surgery is not successful in removing all of the tumor, the extent of cancer left will be determined. If more surgery is feasible, you may be offered that. However, most likely, at that point you will be offered medication, usually given systemically to fight the cancer.

Currently, many studies are underway to investigate the role of medications given before surgery. These **neoadjuvant** therapies may shrink or kill the tumor and make it more operable. So it's worth discussing this option with your surgeon and medical oncologist.

Medications for Stage IV Disease

Here we provide an overview of the medications that are used in Stage IV melanoma. We have organized these by how the medications work, which is a common way that oncologists classify them and present them to patients. Many of these medications are considered **systemic therapies**, meaning they work throughout the body to fight the melanoma.



Targeted Therapies

Targeted therapies are medications that “target” certain processes or proteins in melanoma cells. We will start with the BRAF/MEK targeted therapies, since they are the most common targeted therapies used in melanoma.

As mentioned previously, BRAF is a key protein that helps melanoma cells grow. Patients whose melanoma carries a mutated *BRAF* gene are eligible for therapy targeted to BRAF that helps block the protein and slow the growth of melanoma. When BRAF inhibitors were first introduced and used alone, they were not very good at slowing melanoma growth and had some problematic side effects. The limited efficacy and additional side effects were caused by the cell figuring out ways to work around the block in the cellular pathway. Researchers discovered that when a BRAF inhibitor was combined with a MEK inhibitor, which targets a protein further down in the same cellular pathway, the combination was better at slowing melanoma growth and eliminated or reduced some of the troublesome side effects that were associated with BRAF inhibitors alone. It was as if the combination of medications hit melanoma with a more effective one-two punch.

BRAF/MEK inhibitors are oral (by mouth) drugs. For patients with a *BRAF* mutation, the BRAF/MEK inhibitor targeted therapies are available for both adjuvant treatment and management of Stage IV disease that can’t be managed surgically (unresectable).

The available BRAF/MEK targeted therapies are:

- Dabrafenib (TAFINLAR®) + trametinib (MEKINIST®)
- Vemurafenib (ZELBORAF®) + cobimetinib (COTELLIC®)
- Encorafenib (BRAFTOVI®) + binimetinib (MEKTOVI®)



As we mentioned, the BRAF and MEK inhibitors work best when combined. For this reason, although these drugs are commercially available for use alone, they are rarely used this way. Typically, they are only used alone if someone has a contraindication or cannot tolerate the other drug in the combination. We will, therefore, not spend additional time discussing the use of these drugs as single agents. If you, for some reason, require single-agent therapy, your oncologist will help you evaluate that treatment option.

There are other therapies available that target less common mutations that occur in melanoma. For patients who have melanomas that carry NTRK fusions, drugs such as larotrectinib (VITRAKVI®) and entrectinib (ROZLYTREK®) are available. These drugs are not specifically approved in melanoma, but your oncologist can prescribe one for you if s/he feels it's appropriate. NTRK fusions are often identified by broad genetic screens. For *c-KIT* mutations, inhibitors such as imatinib (GLEEVEC®), nilotinib (TASIGNA®), dasatinib (SPRYCEL®), and sunitinib (SUTENT®) have been evaluated in small studies. Combination approaches, including strategies involving c-KIT-directed therapy plus immunotherapy, are being investigated in clinical trials.

Immunotherapy

Immunotherapy is a treatment that gives your immune system more power to fight your cancer. Every day, our immune system recognizes dangerous substances—cancer cells, foreign invaders like bacteria and some viruses—and hunts them down and destroys them. However, some cancer cells (including melanoma cells) have ways of evading your immune system, preventing it from doing its job. In fact, the immune system may not even recognize these cancer cells, and so they can keep growing and multiplying.

Currently, the immunotherapies we will discuss below are given intravenously, with the exception of talimogene laherparepvec, which is given intralesionally (intra-tumorally, or directly into the tumor).



Checkpoint Inhibitors

Checkpoint inhibitors “take the brakes off” the immune system, allowing it to identify and destroy cancer cells. Currently in melanoma, there are a number of approved checkpoint inhibitors:

PD-1 inhibitors:

- Pembrolizumab (KEYTRUDA®)
- Nivolumab (OPDIVO®) (given alone and in combination with YERVOY®)

PD-L1 inhibitors:

- Atezolizumab (TECENTRIQ®) (used in combination with ZELBORAF® + COTELLIC®)

CTLA4 inhibitors:

- Ipilimumab (YERVOY®) (given alone and in combination with OPDIVO®)



PD-1, PD-L1, and CTLA-4 inhibitors are types of checkpoint inhibitors. PD-1 and PD-L1 inhibitors generally produce fewer and less severe side effects compared with CTLA-4 inhibitors, such as ipilimumab. Nevertheless, the combination of the PD-1 inhibitor nivolumab and the CTLA-4 inhibitor ipilimumab is considered highly effective when a strong response is needed, although the use of this combination is associated with a more severe side-effect profile. There is also a combination therapy of atezolizumab (PD-L1 inhibitor) + vemurafenib + cobimetinib (both targeted therapies) that provides a longer response than targeted therapy alone. Again, it's important to remember that this triple combination is only available to patients whose melanoma is *BRAF* positive.

It's also important to mention that the CTLA-4 inhibitor ipilimumab became commercially available in 2011, before the PD-1 and PD-L1 inhibitors. It was the first new treatment approved for melanoma in decades, and it ushered in a new era of melanoma research and treatment. However, as you will see below in **How Well These Therapies Work**, the PD-1 inhibitors have a better efficacy and safety profile. Therefore, ipilimumab is rarely prescribed as a single-agent therapy. Instead, it is more frequently used in combination with nivolumab. For this reason, we will not spend time discussing ipilimumab as a single-agent therapy.

A Note on Corticosteroids

Corticosteroids are sometimes used to reduce swelling in the brain from melanoma metastases or surgery. Patients who are receiving corticosteroids are sometimes not eligible for immunotherapy right away. Therefore, corticosteroid use is an important factor to consider in choice of therapy.

Interleukin-2 Therapy

Another immunotherapy that has been used for decades to treat melanoma is high-dose interleukin-2 (IL-2). Interleukin-2 is a naturally occurring protein that increases the growth and activity of a variety of immune cells. When used as a high-dose therapy for melanoma, IL-2 enhances the ability of cells in the immune system to target and kill cancer cells. Currently FDA approved as aldesleukin (PROLEUKIN®), high-dose IL-2 is a very powerful therapy that must be given in the hospital setting because it causes some severe side effects. However, for a small subset of patients, IL-2 therapy can cause the cancer to go away for a very long period of time. As discussed below under clinical trials, IL-2 is also being studied in an engineered form to make it more effective at killing cancer cells while decreasing its toxicity. It is also being studied in combinations with checkpoint inhibitors and in combination with tumor infiltrating lymphocyte (TIL) therapy. TIL therapy is described in the clinical trial section below.

Oncolytic Virotherapy

Talimogene laherparepvec (IMLYGIC®, T-VEC) is an immunotherapy made by modifying a herpes virus to increase its ability to home in on tumor cells. When T-VEC is delivered to the tumor, viral reproduction in the tumor cells causes them to burst (**lyse**). T-VEC also causes the production of proteins that stimulate the immune system to come to the tumor location and kill additional cells. Unlike the other immunotherapies mentioned above, T-VEC is an intralesional therapy—it's injected directly into the melanoma tumor on the skin, below the skin, or in the lymph node that can't be easily removed with surgery. As mentioned, T-VEC stimulates the body's immune system to go to the site and attack the melanoma. It also treats tumors away from the site of injection because it causes a local and body-wide immune response. Along with its use for Stage III (in-transit disease), T-VEC is used in patients with Stage IV melanoma that has spread to the skin subcutaneous tissues or nodes away from the original tumor (**remote nodes**).



Cytotoxic Therapies (Chemotherapy)

Chemotherapy drugs generally work by interfering with cell division. Most chemotherapy drugs have the biggest impact on rapidly-dividing cells. While that includes the cancer cells, it also includes other rapidly dividing cells in the body. Because it works broadly, chemotherapy is not classified as targeted therapy. Chemotherapy can be considered for patients with Stage IV melanoma who are not appropriate candidates for immune-based therapy, BRAF/MEK-inhibitors, or clinical trials or for whom these other approaches have not been effective. The chemotherapeutic agents tested in melanoma that have the best evidence are combinations of carboplatin (PARAPLATIN®) and paclitaxel (TAXOL®) or single-agent temozolomide (TEMODAR®). Other agents that also may be considered for use include dacarbazine (DTIC-Dome®), albumin-bound paclitaxel (ABRAXANE®), or the combination of cisplatin/vinblastine/dacarbazine (CVD).

Radiation Therapy

Radiation therapy has a clear role in managing brain metastases, as discussed below. Radiation therapy can also be used as adjuvant therapy after surgery for high-risk melanoma in lymph nodes and to improve symptoms in patients with Stage IV melanoma, such as pain from melanoma in the bone. The side effects of radiation therapy include skin breakdown (ulcers), pain, redness at the site of irradiation, as well as fatigue.



Localized Treatments for Brain Metastases

Neurosurgery

Surgery of the **central nervous system** (the brain and spinal cord) is performed by a specialized neurosurgeon. Surgery for brain metastases is usually restricted for specific circumstances:

- Patients with fewer than three metastases
- Patients who are not candidates for radiation therapy (because the metastases are too large)
- Patients with significant symptoms or bleeding from the tumor
- Patients whose tumors regrow after radiation therapy.

To perform brain surgery, a **craniotomy** is required. In this procedure, the neurosurgeon makes an opening in the skull to access the tumor. The neurosurgeon typically tries to remove the tumor or reduce its size to make other treatments more effective. The tumor tissue is usually evaluated to determine the best treatments (see biomarker discussion above). Usually, after neurosurgery, additional treatments are required, including radiation and systemic therapies, as described below.

Complications during or after any type of surgery can include bleeding, infections, or reactions to anesthesia, although these are not common. A major concern after surgery is swelling in the brain. Anti-inflammatory drugs called corticosteroids are typically given before and for several days after surgery to help lessen this risk. As mentioned previously, use of corticosteroids can affect the choice of systemic therapy.



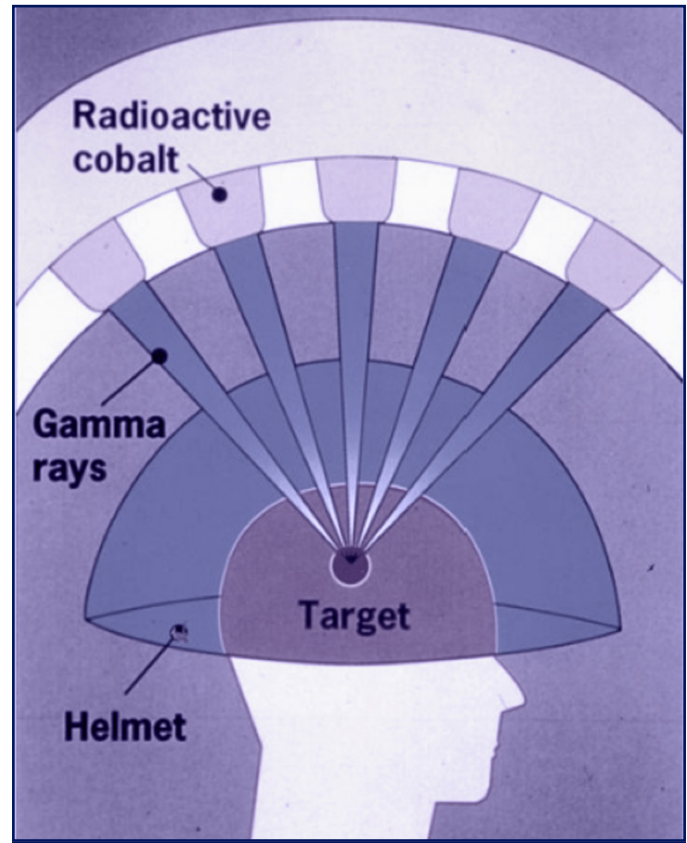
Radiation Therapy for Brain Metastases

Stereotactic surgery (SRS or Gamma Knife) is a computer-guided treatment that provides highly-focused radiation to tumors in the brain. There is no incision or knife. The term reflects the precise way radiation is used like a knife. In the procedure, as shown in Graphic 4, a boxed-shape frame is placed over your head and keeps the target aligned. The frame is fastened to your head with pins. An intravenous line is placed, and a contrast agent is infused in your vein so that the tumor is seen. Most patients are awake for this procedure. Imaging is then done with the frame in place. Your neurosurgeon/radiation oncologist will then plan the dose and location of treatment. The gamma knife then delivers the treatment.

Whole Brain Radiation Therapy (WBRT) is a process in which the entire brain is treated with radiation. It is typically reserved for the following situations:

- Too many metastases for surgery or stereotactic surgery
- Patients with **leptomeningeal disease**, in which the melanoma has spread to the **cerebrospinal fluid**, the fluid that bathes the brain and the spinal cord
- After stereotactic surgery, if the tumors continue to grow
- After trying immunotherapy, if the tumors continue to grow.

Radiation therapy to the brain can cause a range of side effects. WBRT is associated with more side effects than SRS because it is used more broadly. Side effects can include headaches, hair loss, nausea & vomiting, fatigue, hearing loss, and trouble with memory and speech.



Graphic 4. Set up for gamma knife for treatment of brain metastases. Reproduced from Wikimedia Commons, courtesy of NRC.



Clinical Trials/Emerging Approaches

Many patients think clinical trials are an option of last resort, but this belief is a misconception. Robust research is regularly bringing forth new treatments, so clinical trials can offer good options, regardless of where you are on your cancer journey. You should discuss clinical trial options with your oncologist before making any treatment decision—even your very first treatment decision—because some trials are designed to test therapies in patients who have not yet received treatment. These study drugs are being evaluated to see if they are the best option for “first-line” therapy or even before surgery (**neoadjuvant therapy**).

Another misconception about clinical trials is that you may risk getting the placebo (sugar pill) if you don’t receive the study drug. This is not true. Unlike clinical trials of the past, there are no trials in Stage IV melanoma in which one of the groups receives only a placebo. If you are not in the group receiving the study drug, you are guaranteed to receive therapy that is the standard of care.

A benefit of participating in a clinical trial is that you will be monitored very closely by an expert in the field. However, a downside is that clinical trials can sometimes require additional time and inconvenience for tests, appointments, and other monitoring.



AIM at Melanoma has a phone and web-based pre-screening, referral, and educational service to assist patients and their families in their search for clinical trials. For more information about this resource, see <https://www.aimatmelanoma.org/how-melanoma-is-treated/clinical-trials/>



Emerging approaches for melanoma are evolving in real-time. Strategies that are far along in development and show great promise at the time of this writing include:

- **LAG-3 and PD-1 inhibitor combination therapy.** Researchers have recently identified another immune checkpoint called lymphocyte activation gene-3 (LAG-3). As a checkpoint, LAG-3 blocks the growth and activity of certain types of T cells, which are white blood cells that help protect the body from cancer and other threats. LAG-3 is a different target than PD-1/PD-L1, and so when both pathways are inhibited, T cells are unleashed and the cancer killing effect is magnified. Relatlimab is the most advanced LAG-3 inhibitor in development. Recent studies have shown that the combination of relatlimab + the PD-1 inhibitor nivolumab prevent disease progression better than PD-1 inhibitor nivolumab alone in late-stage clinical trials for patients with Stage IV melanoma
- **T-cell transfer therapies (adoptive cell therapies).** This type of immunotherapy involves taking your immune cells, growing them in the laboratory, and giving them back to you (either in greater numbers or with enhancements) to fight cancer. In tumor-infiltrating lymphocyte (TIL) therapy, T cells from around your tumor are tested in the lab to see how good they are at attacking the tumor. The best ones are selected, grown to large numbers, and given back to you. At the time of this writing, lifileucel is the therapy furthest along in clinical development, with ITIL-168, another TIL therapy, also in development. Another type of T-cell transfer is chimeric antigen receptor (CAR) T-cell therapy, which changes the T cells in the lab so they better attack certain proteins on the surface of cancer cells. These super T cells are then returned to you to fight the cancer. There are several CAR T-cell therapies approved for blood cancers, and this therapy is being studied in melanoma
- **Oncolytic viruses.** As already described for T-VEC, this type of immunotherapy uses viruses to infect and destroy cancer cells. One oncolytic intralesional therapy that is being developed takes advantage of the patient's own immunity to polio. Using a modified polio vaccine to target a protein that is shared on the polio virus and cancer cells (thus directing your immune system to attack the melanoma), this therapy, PVSRIPO, has shown a benefit in patients with difficult-to-treat Stage IV melanoma
- **Next generation IL-2-based therapies.** As discussed, high-dose IL-2 can produce long-lasting responses in a subset of patients, but with a safety trade off. IL-2 binds to different receptors to cause its effects: one receptor is associated with its cancer-killing activity and another with its side effects and an actual reduction of the immune response. Investigators are working on next-generation IL-2-based therapies to preferentially activate the receptor responsible for the cancer-killing activity of IL-2 over the receptor associated with the side effects and the reduction in the immune response. A re-engineered IL-2 therapy (nemvaleukin) is in late-stage clinical development that "selects" for the receptor providing anti-tumor activity preferentially. Another agent, bempegaldesleukin, is an IL-2 molecule bound to a chemical chain that makes the drug more targeted to the cancer-killing immune cells within the tumor microenvironment and less to the cells that dampen the immune system. This agent is also in late-stage development.

HOW WELL SYSTEMIC THERAPIES WORK

In this section, we review data from clinical trials of therapies approved for use in Stage IV melanoma. In addition to all of the other factors that you will weigh in your treatment decision, the efficacy of each drug is an important consideration.

Although these are the newest data available, some of these statistics are already likely outdated since they reflect longer term outcomes from patients diagnosed more than five years ago. Overall survival, especially, is expected to be better for patients diagnosed now compared to the survival rates reported in the studies below.

Endpoints, or outcomes measures, help researchers objectively determine whether the treatment being studied is beneficial or not. The outcomes results are the most important information that a trial provides. Wherever possible, we provide data on the following important endpoints:

- **Overall survival (OS):** The length of time from start of treatment that cancer patients live, regardless of whether their cancer spreads, grows, shrinks, disappears, or stays the same size. OS is occasionally reported as a median, which is the middle value in a list of values. Often, OS is reported as percentage of people alive at a specific time point. Below, we have provided the latest survival data available at specific study time points. OS statistics are calculated based on any deaths that occur in the study, not necessarily only the deaths caused by melanoma
- **Progression-free survival (PFS):** The length of time cancer patients live without their cancer growing or spreading. Like overall survival, progression-free survival might be reported as a median, but it also can be reported as a percentage of people experiencing progression-free survival at a specific timepoint (such as three years). While we do not typically report PFS below, it can be found in study reports
- **Overall response rate (ORR).** The percentage of patients whose tumors shrink substantially (by 30% or more) or disappear altogether as a result of treatment. A **Complete Response (CR)** means the tumor(s) completely disappear, while a **Partial Response (PR)** occurs when tumors have shrunk by at least 30% but have not completely disappeared. $ORR = CR + PR$. Even if the treatment works by shrinking or stabilizing tumors that are growing, in a clinical trial, a patient is only considered to have had a “response” if the measurable tumors shrink by at least 30% or more. ***This means the objective response rate underestimates the proportion of patients for whom the treatment is effective.***



Many times, decisions about your therapy are based on such “objective” tumor criteria because they give us a short-term snapshot of how the drug is working. For this reason, where possible, we provide both these tumor response data and survival outcomes for each drug. Additionally, we provide data on outcomes for specific subgroups of patients, which may also be helpful for you and your team in projecting the likelihood of response based on what subgroup you belong to.

As you review the following information, it’s important to keep in mind that these studies were done at different times and involved different groups of people and control groups, which means it’s not appropriate to compare results across the studies. Nonetheless, each study yields information on the efficacy of each of the treatments tested.

Researchers are beginning to collect data from studies comparing these treatments. For example, the DREAMSeq study compared therapy with dabrafenib + trametinib to the combination of nivolumab + ipilimumab as initial therapy for *BRAF*-positive patients with Stage IV disease. While preliminary data from the study suggest that the immunotherapy approach works better, the results have not been published yet at the time of this writing. This is why it is important to talk with your oncology team—they will stay up with the data and help you evaluate it to determine the best treatment for you.

BRAF/MEK Inhibitors

Remember that BRAF/MEK inhibitors are only given to patients whose melanoma is *BRAF*-positive, so the following information is relevant only to those patients. If your melanoma is *BRAF*-negative, you may want to skip to the next section, Checkpoint Inhibitor Immunotherapy.

The BRAF/MEK inhibitors have been studied in a range of clinical trials vs single-agent BRAF inhibitors, which served as the active control group. As mentioned previously, single-agent targeted therapies are rarely used, so it’s more important to see how these combinations performed overall rather than how they compared to the single agents.

The other point to consider is that all three of these targeted therapy combinations have been found effective. It’s important to remember that we don’t know which combination is the best. If you and your oncologist decide to use targeted therapy, you can look at the overall profiles of these different combinations and see which one best suits you.



Dabrafenib + Trametinib

This BRAF/MEK inhibitor combination was evaluated in several studies. We will focus on the data from the COMBI-d study (which compared dabrafenib + trametinib to dabrafenib + placebo), the COMBI-v study (which compared dabrafenib + trametinib to the BRAF-inhibitor vemurafenib) as well as a follow-up study that looked at long-term (five-year) outcomes from both studies. If you would like to review these studies, please see the Long 2015, Robert 2015a, and Robert 2019a citations listed in the **IN-DEPTH READING FROM THE SCIENTIFIC LITERATURE**.

Survival Outcomes

As shown in Graphic 5, in the most recent update from the clinical studies, more than one in three (34%) of patients treated with dabrafenib + trametinib were alive at five years. Nearly one in five did not have disease worsening (were in PFS) at the five-year mark.

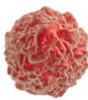
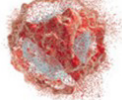



Graphic 5. Dabrafenib + trametinib overall survival outcomes at 5 years.

Tumor Response Outcomes

As shown in Graphic 6, derived from the early report of the COMBI-d study, the overall response rate was higher for the combination—69% of the trial participants who received dabrafenib + trametinib saw a partial or complete response vs dabrafenib alone (53%).

Advantage in overall response rate was also seen with dabrafenib + trametinib vs vemurafenib (the COMBI-v study). The overall response rate was significantly higher for patients receiving dabrafenib + trametinib (64%) than for those receiving vemurafenib (51%).

	PR (tumor shrinks by 30% or more) 	CR (tumor disappears) 	ORR (PR + CR)
Dabrafenib + trametinib	53%	16%	69%
Dabrafenib	40%	13%	53%

Graphic 6. Tumor responses in the COMBI-d study.
ORR = overall response rate; CR = complete response; PR = partial response.

Outcomes for Specific Subgroups

In the long-term outcomes report, dabrafenib + trametinib outcomes were better in certain subgroups of patients.

- **Patients with low tumor burden:** In this study, the investigator classified patients as having low tumor burden when the baseline LDH was below or at the upper limit of normal and there were no more than three organ sites with metastases. Patients with low tumor burden did well: 55% were alive at five years, compared with 34% for the study group overall
- **Complete responders:** For the 109 patients who had a complete response to therapy, the overall survival rate was 71% at five years.

Vemurafenib + Cobimetinib

This combination was evaluated in several studies. We will focus on the data from the CO-BRIM study (which compared vemurafenib + cobimetinib to vemurafenib + placebo), the BRIM-7 study (which evaluated vemurafenib + cobimetinib in individuals who had never received BRAF inhibitors to individuals who had recently progressed on vemurafenib), as well as a follow-up study that looked at long-term (five-year) outcomes from the BRIM-7 study. If you would like to review these studies, please see the Ribas 2014, Larkin 2014, and Ribas 2019 citations listed in the **IN-DEPTH READING FROM THE SCIENTIFIC LITERATURE**.

Survival Outcomes

As shown in Graphic 7, over one in three (39%) patients treated with vemurafenib + cobimetinib were alive at the five-year landmark. This proportion was the same as at the four-year mark, suggesting that a subset of patients experience a favorable long-term outcome.



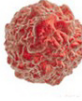
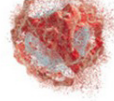

Graphic 7. Vemurafenib + cobimetinib overall-survival outcomes at 5 years.

Tumor Response Outcomes

As shown in Graphic 8 from the CO-BRIM study, the overall response rate was 68% for those receiving the combination therapy, which was significantly higher compared to that for the patients receiving BRAF inhibitor alone (45%).

Outcomes for Specific Subgroups of Patients

Patients with normal LDH levels and a tumor diameter ≤ 45 mm had a three-year survival rate of 53% with the combination therapy, compared with a survival rate of $<10\%$ for patients with an LDH greater than two times the upper limit of normal.

	PR (tumor shrinks by 30% or more) 	CR (tumor disappears) 	ORR (PR + CR)
Vemurafenib + cobimetinib	57	10	68
Vemurafenib + placebo	40	4	45

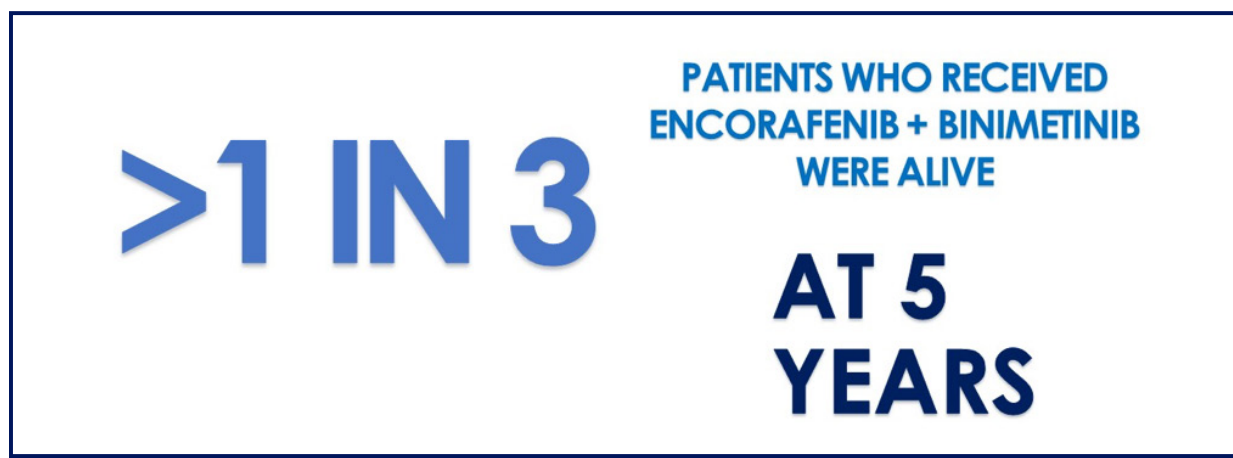
Graphic 8. Tumor responses in the CO-BRIM study.
ORR = overall response rate; CR = complete response; PR = partial response.

Encorafenib + Binimetinib

For the encorafenib + binimetinib combination, we will focus on the data from the COLUMBUS study (which compared encorafenib + binimetinib to encorafenib alone and vemurafenib alone), as well as a follow-up study that looked at long-term (five-year) outcomes. If you would like to review these studies, please see the Dummer 2018, Ascierto 2020, and Dummer 2021 citations listed in the **IN-DEPTH READING FROM THE SCIENTIFIC LITERATURE**.

Survival Outcomes

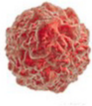
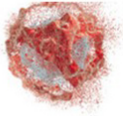

As shown in Graphic 9, at five years, more than one third (35%) of patients treated with encorafenib + binimetinib were alive.



Graphic 9. Encorafenib + binimetinib overall survival outcomes at 5 years.

Tumor Response Outcomes

In the COLUMBUS study, the overall response rate was significantly higher for encorafenib + binimetinib (64%) vs encorafenib (52%) or vemurafenib (41%), as shown in Graphic 10.

	PR (tumor shrinks by 30% or more)	CR (tumor disappears)	ORR (PR + CR)
			
Encorafenib + binimetinib	51%	13%	64%
Encorafenib	45%	7%	52%
Vemurafenib	33%	8%	41%

Graphic 10. Tumor responses in the COLUMBUS study.
ORR = overall response rate; CR = complete response; PR = partial response.

Outcomes for Specific Patient Subgroups

In the follow-up study, rates of overall survival and progression-free survival were similar across subgroups. However, patients elevated LDH levels did not do as well as patients with normal LDH levels, as was seen with other BRAF/MEK inhibitors.

Other Targeted Therapies

Imatinib or nilotinib, inhibitors of mutated *c-KIT*, have been studied in a small number of cases. For metastatic melanoma, these therapies can be considered as second-line therapy (after immunotherapy) for tumors with mutations of *c-KIT*. While these agents do produce overall response rates up to 30%, the responses tend to be short-lived. Therefore, imatinib or nilotinib are recommended as second-line or subsequent therapy. Similarly, larotrectinib or entrectinib are recommended for NTRK-gene fusion-positive tumors in the second-line setting.

Checkpoint Inhibitor Immunotherapy

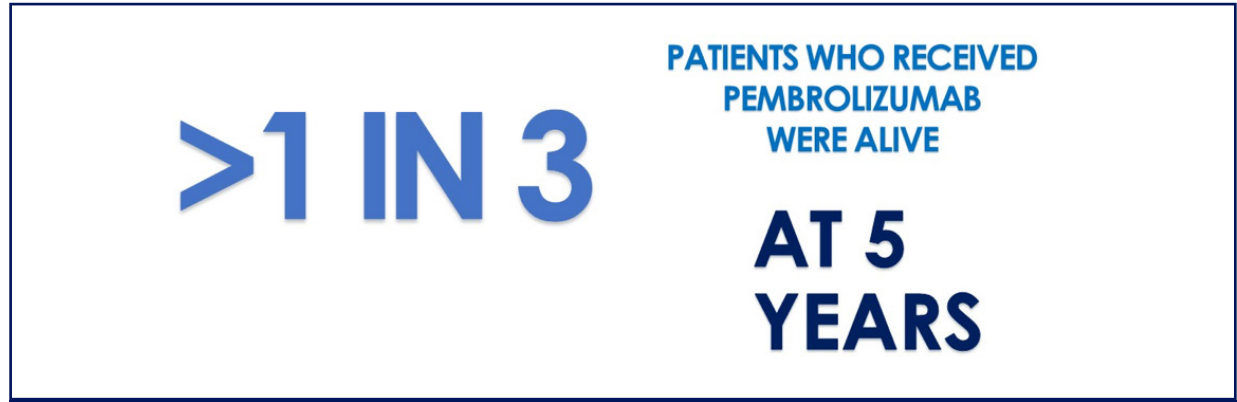
The content below shows data for the checkpoint-inhibitor monotherapy and combination regimens. Ipilimumab is a comparator arm for many of these studies since it was commercially available and the standard of care when the PD-1 inhibitors were being studied. As the data shows, single-agent PD-1 inhibitors have better efficacy than single-agent ipilimumab. For this reason, ipilimumab is not frequently used as monotherapy anymore, and we will not review the studies on it. However, ipilimumab is still used commercially as part of combination immunotherapy. The combination of nivolumab + ipilimumab has greater efficacy than nivolumab or ipilimumab alone. This gives us two different checkpoint inhibitor approaches—single-agent PD-1 inhibitor therapy and combination immunotherapy—which is considered a more aggressive approach.

Pembrolizumab

Pembrolizumab monotherapy has been evaluated in several studies. We will focus on the data from the KEYNOTE-006 study that compared pembrolizumab to ipilimumab in patients with advanced melanoma who had up to one prior therapy. For a review of this study, see Robert 2015b and Robert 2019b in the **IN-DEPTH READING FROM THE SCIENTIFIC LITERATURE**.

Survival Outcomes

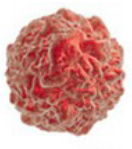
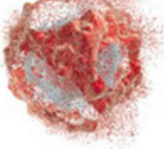

In the KEYNOTE-006 study, over one in three (39%) of all patients with advanced melanoma treated with pembrolizumab monotherapy were alive at five years of follow-up (Graphic 11).



Graphic 11. Overall survival rate at five years with pembrolizumab for the KEYNOTE-006 study.

Tumor Response Outcomes

As shown in Graphic 12 from the KEYNOTE-006 study, the overall response rate was significantly higher in patients who received pembrolizumab than in patients who received ipilimumab.

	PR (tumor shrinks by 30% or more) 	CR (tumor disappears) 	ORR (PR + CR)
Pembrolizumab (every 2 weeks)	29%	5%	34%
Pembrolizumab (every 3 weeks)	27%	6%	33%
Ipilimumab	10.4%	1.4%	12%

Graphic 12. Tumor responses in the KEYNOTE-006 study.

ORR = overall response rate; CR = complete response; PR = partial response.

Outcomes for Specific Subgroups

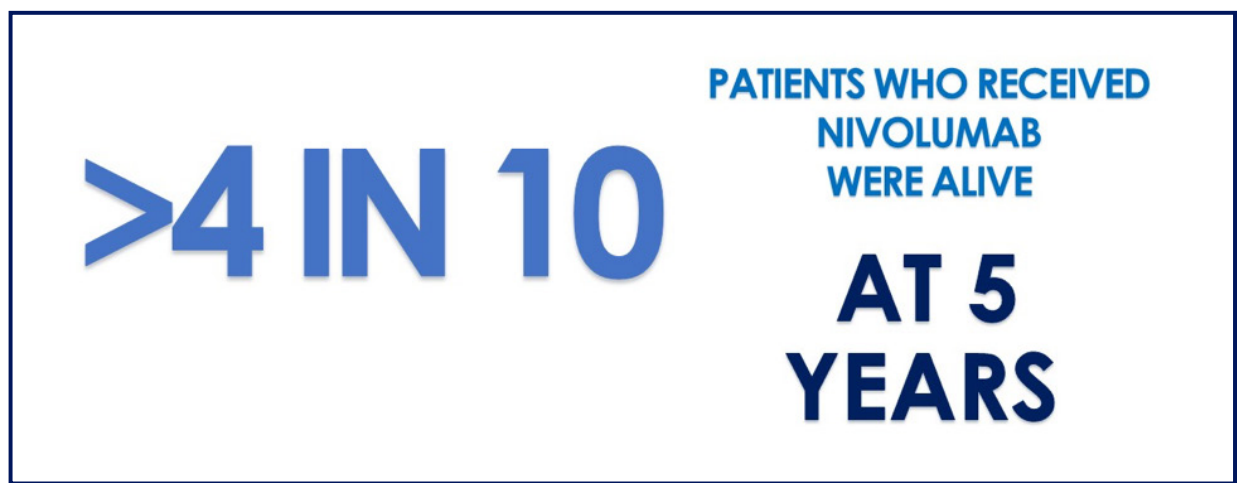
- **PD-L1 levels:** In the KEYNOTE-006 study, subgroups performed well, except for a small subgroup that had negative PD-L1 levels. However, the small number of people in that group make the data hard to interpret. Researchers continue to evaluate the role of PD-L1 levels and response. But for now, testing of PD-L1 levels is not required for checkpoint inhibitor therapy
- **Prior therapy:** In an additional pembrolizumab study (KEYNOTE-001), the overall response was higher in the subgroup of patients without prior treatment (called treatment-naïve patients) than in the overall group of patients. This result is expected, given that disease that progresses through treatment is generally more difficult to treat.

Nivolumab

Nivolumab monotherapy has been evaluated in several studies. We will focus on the data from the long-term report of the CheckMate 067 study (which evaluated nivolumab alone or nivolumab + ipilimumab in comparison with ipilimumab alone). If you would like to review this study, please see the Larkin 2019 citation listed in the **IN-DEPTH READING FROM THE SCIENTIFIC LITERATURE**.

Survival Outcomes

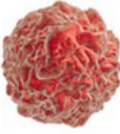
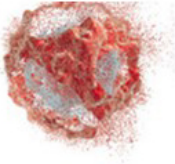

As shown in Graphic 13, more than four out of ten patients who received nivolumab alone (44%) were alive at five years. This percentage is higher than the percentage in patients who received ipilimumab alone (26%). As reported at the 2021 American Society of Clinical Oncology (ASCO) meeting, this effect is sustained. At 6.5 years, 42% of nivolumab-treated patients were alive.



Graphic 13. Proportion of patients alive at five years who received nivolumab in the Checkmate 067 study.

Tumor Response Outcomes

As shown Graphic 14 from the Checkmate 067 study, the overall response rate was significantly higher in patients who received nivolumab alone (45%) as compared with that in patients who received ipilimumab alone (19%).

	PR (tumor shrinks by 30% or more) 	CR (tumor disappears) 	ORR (PR + CR)
Nivolumab	26%	19%	45%
Ipilimumab	13%	6%	19%

Graphic 14. Tumor responses in the CheckMate-067 study.

ORR = overall response rate; CR = complete response; PR = partial response.

Outcomes for Specific Subgroups

- **BRAF Status:** Overall survival at five years in nivolumab-treated patients was similar but slightly higher in patients with *BRAF*-positive melanoma (46%) vs *BRAF* negative (43%)
- **LDH:** Overall survival at five years for patient receiving nivolumab was higher in patients with normal LDH levels (53%) vs survival for patients with elevated LDH levels (28%)
- **PD-L1 expression:** PD-L1 expression alone did not affect outcomes.



Combination Immunotherapy (nivolumab + ipilimumab)

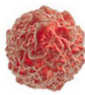
This combination was evaluated in several studies. We will focus on the data from the long-term report of the CheckMate 067 study (which evaluated nivolumab + ipilimumab with nivolumab alone or ipilimumab alone). If you would like to review this study, please see the Larkin 2019 citation listed in the **IN-DEPTH READING FROM THE SCIENTIFIC LITERATURE**.



Graphic 15. Proportion of patients alive at five years who received nivolumab + ipilimumab in the Checkmate 067 study.

Survival Outcomes

As shown in Graphic 15, over one half (52%) patients treated with nivolumab + ipilimumab were alive at five years of follow-up, compared to 44% of patients who received nivolumab alone and 26% of patients who received ipilimumab alone. This was sustained. At 6.5 years, 49% of patients who received the combination were alive (ASCO 2021).

	PR (tumor shrinks by 30% or more)	CR (tumor disappears)	ORR (PR + CR)
Nivolumab + ipilimumab	46%	12%	58%
Nivolumab	35%	9%	44%
Ipilimumab	17%	2%	19%

Graphic 16. Tumor responses in the CheckMate 067 study.
ORR = overall response rate; CR = complete response; PR = partial response.

Tumor Response Outcomes

As shown in Graphic 16 from the CheckMate 067 study, the overall response rate was significantly higher in patients who received nivolumab + ipilimumab compared to the response in patients who had received nivolumab or ipilimumab alone.

Outcomes for Specific Subgroups

- **BRAF status:** Overall survival at five years in nivolumab + ipilimumab-treated patients was higher in *BRAF*-positive patients (60%) vs *BRAF*-negative (48%)
- **LDH:** Overall survival at five years was higher in patients who received the combination with normal LDH levels (60%) vs survival for patients with elevated LDH (38%)
- **PD-L1 expression:** PD-L1 expression alone did not affect outcomes.

Combination Targeted & Immunotherapy: Vemurafenib + Cobimetinib + Atezolizumab

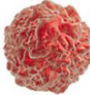
This combination was recently evaluated in patients with a specific *BRAF* mutation (*BRAF*^{V600})-positive Stage IV melanoma. We will focus on the data from the IMspire150 study (which evaluated vemurafenib + cobimetinib + atezolizumab in individuals with *BRAF*^{V600} mutation-positive metastatic melanoma). If you would like to review this study, please see the Gutzmer 2020 citation listed in the **IN-DEPTH READING FROM THE SCIENTIFIC LITERATURE**.

Survival Outcomes

The primary endpoint of the study was progression-free survival (PFS). At a median follow-up of 18.9 months, PFS was significantly longer in the triple-therapy arm (15.1 months) vs 10.6 months for the vemurafenib + cobimetinib arm. At the interim analysis, overall survival showed similar rates between groups, with 64% overall survival for patients treated with vemurafenib + cobimetinib + atezolizumab compared to 57% overall for patients treated with vemurafenib + cobimetinib. Estimated 2-year overall survival rates were 60% in the triple therapy group and 53% in the vemurafenib + cobimetinib group.

Tumor Response Outcomes

As shown in the Graphic 17 from the IMspire150 study, the overall response rate was similar in patients who were treated with the combination of vemurafenib + cobimetinib + atezolizumab compared to patients who were treated with vemurafenib + cobimetinib.

	PR (tumor shrinks by 30% or more)	CR (tumor disappears)	ORR (PR + CR)
Vemurafenib + cobimetinib + atezolizumab	51%	16%	67%
Vemurafenib + cobimetinib	48%	17%	65%

Graphic 17. Tumor responses in the IMspire150 study.
ORR = overall response rate; CR = complete response; PR = partial response.

Outcomes for Specific Subgroups

Initial results of the IMspire150 study suggest that the combination of vemurafenib + cobimetinib + atezolizumab was favored in terms of progression-free survival across prognostic subgroups, regardless of LDH level and PD-L1 status.

At this time, it is unknown how the use of the vemurafenib + cobimetinib + atezolizumab first line would compare with starting with immunotherapy and then providing vemurafenib + cobimetinib sequentially.

High-Dose IL-2 Immunotherapy

High-dose IL-2 provides long-lasting responses in a small proportion of patients. The overall response rate is around 16%, with 6% of patients experiencing complete responses. For patients who experienced a complete response, it often lasted—60% of patients who had a complete response maintained that response from 3.5 to 10 years. Some are expected to stay in complete response for even longer periods of time.

Intralesional Immunotherapy Plus PD-1-Inhibitor Therapy

Several studies have or are evaluating T-VEC in combination with checkpoint inhibitors for patient with both injectable and non-injectable metastases. If you would like to review the studies, please see the Gogas 2021 and Chesney 2018 citations listed in the **IN-DEPTH READING FROM THE SCIENTIFIC LITERATURE**.

The combination of T-VEC plus pembrolizumab was compared with pembrolizumab alone in patients with advanced melanoma. While median progression-free survival was 14.3 months for the combination as compared with 8.5 months for pembrolizumab alone, this was not a significant difference. Overall survival was not expected to achieve statistical significance at the planned analysis. The overall response rate was 48.6% for the T-VEC + pembrolizumab group as compared with 41.3% for the pembrolizumab group, which was also not statistically different. Therefore, this was considered a negative study.

The combination of T-VEC plus ipilimumab was compared with ipilimumab alone in patients with advanced melanoma. The primary endpoint of this study was overall response rate, which was significantly improved in the T-VEC plus ipilimumab arm (39%) as compared with the ipilimumab arm (18%). This study did not report data for overall survival, as patients were still being followed at the time of its publication. However, progression-free survival data was improved with the T-VEC + ipilimumab combination (8.2 months), as compared with the ipilimumab group (6.4 months).

While studies are still ongoing, these data are not encouraging. In clinical practice, T-VEC is not likely to be used in conjunction with PD-1 inhibitor therapy to enhance the efficacy of the PD-1 inhibitor.

Cytotoxic therapies

The cytotoxic therapies (chemotherapies) such as dacarbazine, temozolomide, paclitaxel, and albumin-bound paclitaxel can help some patients (~20%) with melanoma. They remain an option for patients who have failed other therapies or who cannot tolerate other therapies.

Medications for Brain Metastases

Many of the initial studies of the treatments discussed above excluded patients with brain metastases. However, additional studies have been conducted that help us tease out the role of different therapies for brain metastases. A review of the data supporting the use of these agents for brain metastasis reveals some caveats:

- BRAF/MEK inhibitor combinations do have activity against brain metastases, but the response rates are lower than for disease outside the brain (**extracranial disease**). These agents still work in patients who are *BRAF* positive who have symptomatic disease that required corticosteroids
- Checkpoint inhibitors, alone or in combination, have efficacy against brain metastases. Many of the studies are ongoing. However, because corticosteroids can interfere with the activity of checkpoint inhibitors, their use in patients receiving corticosteroids for symptomatic brain metastases is limited
- Some experts propose that checkpoint inhibitors—particularly combined therapy—should be used in combination with SRS in patients with a few or a single-brain metastases. For patients with brain disease that is symptomatic or rapidly progressing, BRAF/MEK inhibitor therapy can be used in patients who are *BRAF* positive.



SIDE EFFECTS OF STAGE IV SYSTEMIC THERAPIES

The side effects of the drugs to manage Stage IV melanoma are shown below. For each type of therapy, we describe the common side effects experienced by 10% or more of patients, regardless of how serious they are. We also list separately the serious side effects—those that are considered severe or life threatening. In listing of the common side effects, we focused on signs (objective evidence of the side effect that someone else can observe, such as a lump) and symptoms (the subjective experience of the side effect you experience, such as fatigue) rather than laboratory abnormalities, such as liver enzyme elevations. However, we did consider laboratory abnormalities in the discussion of serious side effects, where they are grouped by organ systems (for example, kidney and liver issues).

Targeted Therapies

Targeted therapy is associated with a range of side effects.

In the 5-year analysis from the studies of dabrafenib + trametinib, 98% of patients who received the combination reported side effects. Common side effects of dabrafenib + trametinib are shown in Graphic 18.

In the study of vemurafenib + cobimetinib, 99% of patients reported side effects. In the 18-month follow-up study, common side effects of vemurafenib and cobimetinib were found as shown in Graphic 19. We did not include laboratory abnormalities here.

Graphic 18. Common side effects with dabrafenib + trametinib (occurring in 10% or more of patients).

Common side effects associated with dabrafenib + trametinib	
• Fever (58%)	• Joint aches (29%)
• Nausea (37%)	• High blood pressure (29%)
• Diarrhea (36%)	• Rash (28%)
• Headache (35%)	• Cough (25%)
• Fatigue (35%)	• Swelling (19%)
• Chills (34%)	• Muscle aches (18%)
• Vomiting (31%)	

Graphic 19. Common side effects with vemurafenib + cobimetinib (occurring in 10% or more of patients).

Common side effects/laboratory abnormalities associated with vemurafenib and cobimetinib	
• Rash (73%)	• Retinal problems (27%)
• Diarrhea (61%)	• Vomiting (26%)
• Photosensitivity (48%)	• Decreased appetite (20%)
• Nausea (43%)	• Hair loss (17%)
• Joint aches (38%)	• Decreased heart function (12%)
• Fever (29%)	• Skin thickening (10%)

In the study of encorafenib + binimetinib, side effects occurred in a large proportion of patients. The most common side effects are shown in Graphic 20.

Graphic 20. Common side effects with encorafenib + binimetinib (occurring in 10% or more of patients).

Common side effects associated with encorafenib + binimetinib	
• Fatigue (43%)	• Rash (22%)
• Nausea (41%)	• Constipation (22%)
• Diarrhea (37%)	• Headache (22%)
• Vomiting (30%)	• Vision problems (20%)
• Abdominal pain (28%)	• Fever and chills (18%)
• Joint pain/swelling (26%)	• Dry skin (16%)
• Muscle problems (23%)	• Hair loss (14%)
• Thickening skin (23%)	• Itchiness (13%)

It's important to consider the serious side effects of targeted therapies.

In the dabrafenib/trametinib product information, there is a warning about the following serious side effects:

- Risk for new skin cancers, bleeding problems, stomach or intestinal problems; blood clots; heart problems; eye problems; lung problems; severe fever; serious skin problems; increased blood sugar; breakdown of red blood cells (anemia) in people with a condition called G6PD deficiency; harm to a developing fetus

For vemurafenib/cobimetinib, there is a warning about the following serious side effects:

- Risk for new skin cancers, bleeding problems, allergic reactions, serious skin reactions, heart rhythm problems, liver problems, eye problems, muscle problems, photosensitivity; worsening the side effects from radiation treatment, connective tissue problems (thickening of the flesh of your hands/feet)

For encorafenib/binimetinib, there is a warning about the following serious side effects:

- Risk for new skin cancers, heart problems (including heart failure), blood clots, bleeding problems, eye problems, lung or breathing problems, liver problems, muscle problems, changes in your heart rhythm, harm to a developing fetus.

How are the Side Effects of Targeted Therapies Managed?

With targeted therapy, sometimes an individual side effect can be managed with specific medications (for example, acetaminophen for fever) and supportive care (for example, increasing fluids in patients with fever). Other times, these side effects can be managed with either a decrease in the dosage or by briefly stopping one or both drugs and then resuming the drug(s) after the symptoms go away. Sometimes when the drug or drugs are resumed, it is at a lower dosage, with the goal of eliminating the side effect or reducing its impact. In some rare cases, the drug may need to be permanently discontinued. Once patients stop taking the drugs, the drugs wash out of the body within a few months, and the symptoms typically stop.

A safety concern of targeted therapy is the potential for drug-drug interactions, since these drugs are broken down by a common enzyme that breaks down other medications as well. If you are on other medications, discuss this subject with your oncologist. This safety concern is especially important if you are taking any medications that may cause heart arrhythmias or you are on hormonal contraceptives, since these two types of drugs can cause drug-drug interactions with the targeted therapy. Drug-drug interactions are less of an issue with immunotherapies, since they are not broken down by the same enzymes acting on most prescription drugs.

AIM has developed side-effect management sheets for these targeted therapies. They help you recognize the side effects and know what to do about them. See below to view sheets.



Immunotherapy

Immunotherapy is associated with a range of side effects. Some are these are directly related to the medication; others are caused by the immune system's activation by the drug.

Checkpoint Inhibitors

Because checkpoint inhibitors work by unleashing the body's immune system to fight the cancer, the immune system may get revved up and attack any organ or tissue. If you receive immunotherapy, you can have a range of side effects affecting any part of your body. Also, because these side effects are caused by changes in your immune system and not directly by the drug, they can happen at any time during treatment or even after treatment has ended.

In the pembrolizumab and nivolumab clinical trials, most patients had side effects that could be linked to the therapy. Severe or life-threatening side effects generally occurred in less than 20% of patients. Graphic 21 lists the common side effects associated with pembrolizumab, Graphic 22 those associated with nivolumab, and Graphic 23 those associated with nivolumab + ipilimumab.

In the KEYNOTE 006 study, 98% of patients treated with pembrolizumab experienced at least one side effect related to treatment. See Graphic 21 for the most common.

Graphic 21. Common side effects associated with pembrolizumab (occurring in 10% or more of patients).

Common side effects associated with pembrolizumab	
• Feeling tired (26%)	• Nausea (14%)
• Itchy skin (21%)	• Joint pain (14%)
• Diarrhea (loose stools) (19%)	• Weakness (13%)
• Vitiligo (loss of pigment) (13%)	• Rash (17%)

In the analysis of the CheckMate 067 study, 87% of patients who received nivolumab alone had side effects related to treatment. The most common side effects are shown in Graphic 22.

Graphic 22. Common side effects associated with nivolumab (occurring in 10% or more of patients).

Common side effects associated with nivolumab	
• Feeling tired (36%)	• Nausea (13%)
• Rash (24%)	• Joint pain (11%)
• Itchy skin (23%)	• Decreased appetite (11%)
• Diarrhea (22%)	• Low thyroid (10%)

In the analysis of the CheckMate 067 study, 96% of patients who received nivolumab/ipilimumab had side effects related to treatment. The most common side effects are shown in Graphic 23.

Graphic 23. Common side effects associated with nivolumab/ipilimumab (occurring in 10% or more of patients).

Common side effects associated with nivolumab/ipilimumab	
• Diarrhea (45%)	• Vomiting (15%)
• Feeling tired (38%)	• Joint pain (14%)
• Itchy skin (36%)	• Inflammation of the colon (13%)
• Rash (30%)	• Shortness of breath (12%)
• Nausea (28%)	• Flat and raised rash (12%)
• Fever (19%)	• Overactive thyroid (11%)
• Weakness (10%)	• Headache (11%)
• Low thyroid (17%)	• Decreased appetite (19%)



Potentially serious side effects of checkpoint inhibitors can become life-threatening. These side effects are shown in Graphic 24. This list is not complete—as mentioned previously, any organ or body system can be affected. These can include longer-term data.

Graphic 24. Overall and serious side effects with checkpoint inhibitors.*

Potentially serious side effect	Occurrence Rate (% of Patients Affected) Overall		Severe or Life-Threatening Occurrence Rate (% of Patient Affected)	
	PD-1 inhibitor alone (such as nivolumab or pembrolizumab)	Combination therapy (nivolumab + ipilimumab)	PD- 1 inhibitor alone (such as nivolumab or pembrolizumab)	Combination therapy (nivolumab + ipilimumab)
Skin problems				
Rash	9% to 40%	53%	1% or less	15%
Itching	14% to 27%	39%	0%	2%
Intestinal problems				
Diarrhea, which can lead to dehydration	15% to 36%	54%	2.5% to 5%	11%
Colitis (inflammation of the colon)	1% to 4%	25%	3% or less	14%
Hormonal problems				
Thyroid (most common)	10% to 11%	20% or more	1% or less	1% or less
Other endocrinopathies involving the pancreas (diabetes), adrenal glands, or pituitary (control center of the brain)	Less than 3%	Less than 0%	Less than 1%	Less than 3%
Liver problems	Less than 5%	25%	1% to 2%	15%
Lung problems (called pneumonitis)	1% to 5%	7% to 10%	1% to 2%	1% to 2%
Neurologic problems (including headache & peripheral neuropathy)	6%	12%	Less than 1%	Less than 1%
Kidney problems	1%-5%	4% to 5%	Less than 1%	Less than 1%

*Rates of side effects are listed from clinical trials or product reports, which may include longer-term data. Rates may be higher in the real-world setting. Side effects are generally grouped from most common to least common.

AIM has developed side-effect management sheets for checkpoint inhibitors. They help you recognize the side effects and know what to do about them. See below to view sheets.

AIM RESOURCES

(Click on the circles to view the sheets)

**KEYTRUDA Side-effect
Management Sheet**

**OPDIVO Side-effect
Management Sheet**

**OPDIVO-YERVOY
Side-effect
Management Sheet**

Combination Targeted Therapy and Immunotherapy

When targeted therapy and immunotherapy are combined, the side effects reflect both types of therapy. In the study of vemurafenib + cobimetinib + atezolizumab, 99% of patients experienced side effects. The most common are shown in Graphic 25.

Serious side effects associated with the triple therapy include immune-mediated pneumonitis (lung injury), immune-mediated colitis (inflammation of the colon), immune-mediated hepatitis (liver damage), adrenal insufficiency, problems with the pituitary gland, thyroid problems, diabetes mellitus, kidney damage, and serious skin problems.

Graphic 25. Common side effects associated with vemurafenib + cobimetinib + atezolizumab (occurring in 10% or more of patients).

Common side effects associated with vemurafenib + cobimetinib + atezolizumab	
• Diarrhea (42%)	• Weakness (16%)
• Rash (41%)	• Retinal problems (15%)
• Joint pain (39%)	• Dermatitis (dry, itchy skin) (14%)
• Fever (39%)	• Vomiting (13%)
• Feeling tired (27%)	• Low blood count (anemia) (11%)
• Nausea (23%)	• Redness (11%)
• Itching (21%)	• Swelling (11%)
• Muscle aches (21%)	• Sunburn (11%)
• Photosensitivity (21%)	• Decreased appetite (10%)
• Raised/flat rash (20%)	• Dry skin (10%)
• High thyroid (17%)	• Lung inflammation (10%)
• Low thyroid (17%)	

IL-2

Aldesleukin (IL-2) is a very powerful medicine that can only be administered at select institutions throughout the United States. Certain patients are more likely to do well on this therapy, specifically those who have

- No infection
- No autoimmune or inflammatory disorders
- No lung, heart, kidney, or brain or spinal cord issues
- No organ transplants
- No cancer that has spread to the brain or spinal cord.

The most common side effects are low blood pressure (71%), diarrhea (67%), chills (52%), vomiting (50%), difficulty breathing (43%), rash (42%), and high bilirubin (40%). The symptoms that were life threatening that occurred in more than 1% of patients are shown in Graphic 26.

Graphic 26. Serious side effects associated with aldesleukin.

Potentially serious side effect	Overall occurrence rate (% of patients affected)	Life threatening occurrence rate (% of patients affected)
Hypotension	71%	3%
Diarrhea	67%	2%
Elevated bilirubin (liver problem)	40%	2%
Serious respiratory disorders (eg, requiring a ventilator)	11%	3%
Coma	Not common	2%
Low urine output	63%	6%
No urine output	Not common	5%

T-VEC

The most common side-effects with T-VEC (happening in more than 20% of patients) are flu-like symptoms such as pyrexia, chills, fatigue, as well as nausea, injection-site pain, and vomiting. T-VEC contains a live herpes virus; therefore, there are a range of safety precautions that have to be taken to prevent other people from contracting the herpes virus. For detailed discussion of T-VEC side effects and safety precautions, see <https://1pgozz2wgm3s1zpoz1y808b-wpengine.netdna-ssl.com/wp-content/uploads/AIM-IMLYGIC-MULTIPAGE.pdf>. When T-VEC is used in combination with checkpoint inhibitors, early results from the combined approach showed no new unexpected side effects; the most common side effects were fatigue, rash, chills, fever, and joint pain. Immune-related side effects did occur.

How are these side effects managed?

With immunotherapy, reducing the dosage is not generally recommended. The management of these side effects typically involves stopping immunotherapy and then managing the side effect. In many cases, corticosteroids are used to reduce the immune response, after which immunotherapy can be restarted. But in severe cases, the drug may need to be discontinued.

With IL-2, the side effects are managed through close intensive care in the hospital. T-VEC side effects are managed like the flu, and specific safety precautions are taken to prevent spread of the herpes virus.



How the Drugs Are Given

For targeted therapy, you will be taking capsules/tablets twice a day as long as you are tolerating the combination and the melanoma doesn't progress.

Pembrolizumab is given as an IV infusion into your arm, typically at your oncologist's office. The drug is usually given every three weeks (but can be given every six weeks) and will be continued for as long as you tolerate it, and the melanoma doesn't progress. The infusion lasts for 30 minutes.

Nivolumab is given as an intravenous (IV) infusion into your arm, typically at your oncologist's office. The drug is usually given every two weeks (but can be given every four weeks) and will be continued for as long as you tolerate it, and the melanoma doesn't progress. The infusion lasts for 30 minutes.

When nivolumab and ipilimumab are given in combination, both drugs are given by IV. Nivolumab is given over a 30-minute period. Ipilimumab is given over 90 minutes. They will be given every three weeks for a total of four doses. After that, nivolumab is usually given alone every two or four weeks. The therapy is usually given for as long as you tolerate it, and the melanoma doesn't progress for a maximal treatment time of two years.

For vemurafenib + cobimetinib + atezolizumab, the administration includes a period with just the targeted therapies (which is capsules/tablets twice a day) for 28 days. This is followed by the triple combination approach, which includes 28 days with targeted therapy along with atezolizumab every two, three, or four weeks given as an intravenous infusion into your arm (over a 60-minute period for the first dose and, if tolerated, over 30 minutes thereafter), typically at the oncologist's office. The triple drug combination will be continued for as long as you tolerate it, and the melanoma doesn't progress.

As mentioned, IL-2 is given in the hospital and requires hospital stays of five to seven days per course, most often in an intensive care or bone marrow transplant setting. The infusion itself is given by an intravenous line for a treatment course of two cycles, each given three times per day for five days. So you take a two-week break before the second cycle. A month after the second cycle, the scans are done to see if the cancer is shrinking. If it is working you can receive up to a total of six cycles of IL-2.

T-VEC is injected directly into the tumor in the physician's office or clinic. As mentioned, T-VEC is made with a herpes virus so you will need to be careful with dressing changes and potential exposure to your loved ones, particularly those who are immunocompromised or pregnant. The injections are at the initial visit, then three weeks later, and then every two weeks while you have the tumor to inject. You can be treated for six or more months.

Now that you have a better understanding of how each treatment is given, here are some questions you may want to ask yourself that will help you consider which treatment option is best for you:

Targeted Therapy

Targeted therapy is generally delivered orally (by mouth).

- How do you feel about having to take “pills” every day?
- Will you remember to take your medication twice a day, every day?
- The trametinib component of targeted therapy must be refrigerated. Would this be an issue for you (for example, having to keep the medication at the proper temperature when traveling)?
- How diligent will you be about taking these pills? What if your medications require taking them on an empty stomach (at least 1 hour before or two hours after a meal)?
- For the triple combination, are you willing to take medication every day and go to an office for an infusion as well?

Many patients expect that pills will have fewer side effects than IV drugs, but that’s not always the case. You can get rashes or feel achy with oral drugs just as you do after an IV infusion, and you may be less mentally prepared for side effects from an oral drug than from an infusion.

Immunotherapy

Immunotherapy is typically delivered via infusion at an infusion center or hospital.

- Are you willing to go to an infusion center every two, three, four, or six weeks?
- Do you have transportation and the means to get to the infusion center?
- Can you arrange your schedule to be at the infusion center every two, three, four, or six weeks?

High-Dose IL-2

IL-2 requires hospitalization, and you don’t know in advance how many cycles it requires.

- Is there an IL-2 infusion center near you? If not, are you willing to travel for it?
- Are you prepared to stay in the hospital for your IL-2 treatments?
- Since you don’t know how many cycles you will tolerate, can you be flexible in your plans for several months?

T-VEC

T-VEC involves lesion injections at the doctor’s office, and you have safety precautions to consider at home.

- Does your oncologist’s office perform T-VEC injections? If not, where is the nearest center and are you willing to travel to it?
- Are you prepared to go into the office for injections every 2 weeks (and potentially more if you are receiving additional immunotherapy)?
- Do you have anyone pregnant or immunocompromised in your house?
- Do you have the support you need at home to handle dressing changes and disposal of waste?

FINANCIAL/ACCESS ISSUES

Targeted therapies and immunotherapies are innovative medicines and are generally costly. Before sitting down to make your treatment decision, you should ask your oncologist's office to contact your health insurance company to find out whether these medications are covered by your insurance and if you will be responsible for paying for any part of the bill. You can also look into your coverage on your own by calling your insurance company and asking. Several things to consider include the following:

- 1. If you have commercial insurance.** With commercial insurance, you generally can receive co-pay assistance from the drug manufacturer. Financial assistance information for targeted therapy (Novartis, Pfizer, Inc; and Genentech) and immunotherapy (Amgen Inc; Bristol Myers Squibb; Clinigen, Inc; Genentech, Inc; Merck & Co, Inc.) is shown below under **MY RESOURCES**.
- 2. If you have insurance from a federal/state program (such as Medicare, Medicaid, or Tricare).** If you have insurance through a federal/state insurance program, you can't receive financial assistance from the drug manufacturer, but you may be eligible for co-pay assistance from an independent charitable foundation. <https://www.panfoundation.org/disease-funds/melanoma/>
- 3. If you are not insured.** If you are not insured, you may be eligible for free medications through drug manufacturers, charitable organizations, or designated hospitals, depending on your income. See the specific information from the manufacturers listed in **MY RESOURCES**.

To find additional financial assistance, see <https://www.growingfamilybenefits.com/cancer-without-insurance/> or <https://www.hrsa.gov/get-health-care/affordable/hill-burton/facilities.html>

If for any reason, you have difficulty accessing testing or therapies or need assistance with travel or housing, please see the Other Helpful Organizations page on the AIM at Melanoma webpage: <https://www.aimatmelanoma.org/support-resources/helpful-organizations/>

- 4. Which therapy you are considering (IV at office vs oral at home).** For insurance purposes, oral drugs may be treated differently than an IV drug. If you are on Medicare, oral drugs such as targeted therapies will most likely be covered under Medicare Part D, which is the prescription drug benefit, and nivolumab or pembrolizumab will most likely be covered under Medicare Part B. Note that there may be an out-of-pocket cost difference because of this differentiation.
- 5. Whether you will be able to work.** Here are some questions to ask yourself:
 - Are you able to miss work during treatment, either to receive infusions or because of the side effects of therapy?
 - Does your work require you to travel?
 - If you work full time, can you arrange a flexible schedule to meet your treatment requirements? It is important to consider these factors and find out your legal protections under the Family and Medical Leave Act. The Patient Advocate Foundation at www.patientadvocate.org (800.532.5274) can assist in this process.

PREGNANCY, FERTILITY, AND FAMILY PLANNING

Pregnancy Prevention

Whether you are a woman of childbearing age or a man who is sexually active, it is important that you use effective birth control while on treatment and for the specified time thereafter. These medications can cause fetal harm. Each medication varies in its warnings related to fetal harm and use of birth control.

Targeted Therapies

- People taking dabrafenib + trametinib should use an effective nonhormonal birth control method such as a condom, diaphragm, or spermicide during treatment and for four months after the last dose. Hormonal birth control (is not recommended because of the potential for interaction with this drug combination
- People taking vemurafenib + cobimetinib should use an effective nonhormonal birth control method such as a condom, diaphragm, or spermicide during treatment and for two weeks after the last dose. Hormonal birth control is not recommended because of the potential for interaction with this drug combination
- People taking encorafenib + binimetinib should use an effective nonhormonal birth control method such as a condom, diaphragm, or spermicide during treatment and for one month after the last dose. Hormonal birth control is not recommended because of the potential for interaction with this drug combination.

Immunotherapies

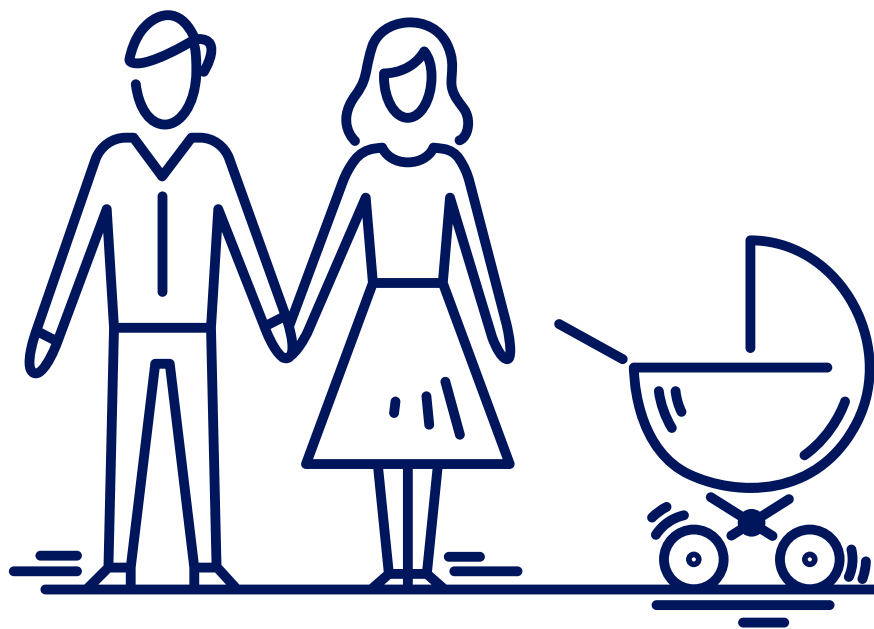
- For nivolumab or pembrolizumab or the combination of nivolumab + ipilimumab, you should use an effective method of birth control during treatment and for six months after the last dose of therapy
- For T-VEC, you should use an effective method of birth control during treatment and for 30 days after the last administration. Sexual intercourse without a latex condom should be avoided. A patient who received T-VEC should wait three months before becoming pregnant. Special care needs to be made to avoid exposing a pregnant woman to the herpes virus since it can be transmitted to the baby during birth. Close contacts who are pregnant should avoid changing dressings and coming in contact with fluids of the patient during the course of therapy
- For IL-2, the benefits of therapy need to be weighed against potential fetal harm.

FERTILITY/FAMILY PLANNING

Fertility and family planning can be important issues to consider. Little is specifically known about the impact of these drugs on fertility. What is known is that once targeted therapy is discontinued, there are generally no long-term side effects, and the drugs are out of your system relatively quickly. If you use effective birth control and don't conceive for four months after you stop treatment, it is unlikely the medication would have a long-term effect on fertility.

With immunotherapy, fertility questions are more complex because of the potential of long-term impact on the immune system from these drugs in both men and women. Side effects could occur (including hormonal changes such as pituitary or thyroid problems) that could impact fertility due to the need for additional hormone supplementation. Again, at the very least, you should avoid trying to conceive for at least six months after you stop treatment.

It's important to have a frank conversation with your oncology team about your family planning issues prior to starting treatment. You might also want to consider seeing a fertility specialist who is familiar with these issues in cancer patients. You may wish to discuss whether you can freeze some of your eggs/sperm before treatment if you are considering trying to conceive later. Your oncology team might have some names of specialists who can help.



SHARED DECISION MAKING

The following worksheets can be used to evaluate your treatment options based on the different factors that are important to you. There is a sheet for targeted therapy, immunotherapy, and more aggressive immunotherapeutic options (including combination approaches).

Worksheet 1: Targeted Therapy

Factor to Consider	My Thoughts	Weighing of Factor to You
My tumor status (<i>BRAF</i>)		1 2 3 4 5
Effectiveness of the drug		1 2 3 4 5
Side effects		1 2 3 4 5
Convenience of receiving the treatment		1 2 3 4 5
Quality of life		1 2 3 4 5
Financial considerations		1 2 3 4 5
Fertility/family planning		1 2 3 4 5
Other factors		1 2 3 4 5

1 – Not At All Important

2 – Slightly Important

3 – Important

4 – Fairly Important

5 – Very Important

Worksheet 2: Single-agent PD-1 directed Therapy (for example, nivolumab or pembrolizumab)

Factor to Consider	My Thoughts	Weighing of Factor to You
My tumor status (<i>BRAF</i>)		1 2 3 4 5
Effectiveness of the drug		1 2 3 4 5
Side effects		1 2 3 4 5
Convenience of receiving the treatment		1 2 3 4 5
Quality of life		1 2 3 4 5
Financial considerations		1 2 3 4 5
Fertility/family planning		1 2 3 4 5
Other factors		1 2 3 4 5

1 – Not At All Important

2 – Slightly Important

3 – Important

4 – Fairly Important

5 – Very Important

Worksheet 3: Aggressive Immunotherapy Approach (example, combination immunotherapy, IL-2)

Factor to Consider	My Thoughts	Weighing of Factor to You
My tumor status (<i>BRAF</i>)		1 2 3 4 5
Effectiveness of the drug		1 2 3 4 5
Side effects		1 2 3 4 5
Convenience of receiving the treatment		1 2 3 4 5
Quality of life		1 2 3 4 5
Financial considerations		1 2 3 4 5
Fertility/family planning		1 2 3 4 5
Other factors		1 2 3 4 5

1 – Not At All Important

2 – Slightly Important

3 – Important

4 – Fairly Important

5 – Very Important

SURVIVORSHIP AND ADVANCED CARE PLANNING

Patients with melanoma are living longer than ever before, and it's important to think about the impact of the disease and therapies on your life in general. You will need to address the emotional and physical effects of treatment. Given the challenges you face, you may want to connect with other patients in the community who are sharing your cancer journey. Professional help might be warranted to address the anxiety or other strong emotions associated with your Stage IV diagnosis. Perhaps you will do well with therapy but you may have anxiety about the disease coming back. You can work with your oncology care team to develop a survivorship care plan. This plan will help you be proactive about maintaining your health and assuring proper cancer follow-up care after treatment. For more on this topic, see AIM's page: <https://www.aimatmelanoma.org/support-resources/survivorship/>

While your oncology team is working to achieve the best outcomes possible, it's impossible to determine if, and when, things may not go according as hoped. For advanced planning, it's best to explore different scenarios so you can make sure that your wishes are met as much as possible during your cancer journey. Advanced planning can include everything from choosing a healthcare proxy, to making an advanced directive, to addressing your will, to assessing under what circumstances you would want to withdraw care and move on to hospice.

This kind of planning is best done when you are feeling well—if you postpone this type of planning too long, you may not be well enough to make the decisions thoughtfully. Or you may not get a chance to do any planning at all, which can lead to unnecessary additional stress and confusion for yourself and your loved ones during a difficult time. A resource from the American Society of Clinical Oncology (ASCO) on advanced planning is included in the **INFORMATION RESOURCES** section at the end of this document.

Final Thoughts

We hope you found this guide to be helpful in evaluating your options for your Stage IV melanoma. Our goal has been to empower you to work with your oncology team to make the best decision for you. We have included in the list below other resources that you may want to consult as you evaluate your options. Being informed puts you in the best position to have an active role in this important decision.



MY RESOURCES

AMGEN

AMGEN ASSIST 360™

<https://www.amgenassist360.com/>

TEL: 1-888-4ASSIST (1-888-427-7478)

FAX: 1-866-218-4777

BRISTOL MYERS SQUIBB

BMS Access Support; BMS Oncology Co-Pay Assistance Program

1-800-861-0048

CLINIGEN

Proleukin Support Hotline 877-PROLEUKIN (776-5385)

MERCK

The Merck Access Program

1-855-257-3932

NOVARTIS

Novartis Patient Assistance Foundation, Inc.

1-800-245-5356

Patient Assistance Now Oncology

1-800-282-7630

ROCHE/GENENTECH

Genentech Access Solutions

Provides coverage and reimbursement support, patient assistance, and information resources

https://www.genentech-access.com/hcp.html?c=gas-16a14a8e264&gclid=CjwKCAjwmqKJBhAWElwAMvGt6Gric6MF5CeAD_Y_FMals3JBsGR4yjFfhyQGlbffuMKYGnBGWLWCABoCKxcQAvD_BwE&gclsrc=aw.ds

Phone: (866) 422-2377 or (866) 4 ACCESS

Hours: Monday - Friday 6am - 5pm PT

Genentech Patient Foundation

For eligible patients who are uninsured or who have been rendered uninsured because they have been denied coverage by their insurance company

Phone: (888) 941-3331

Hours: Monday - Friday 6am - 5pm PT

INFORMATION RESOURCES

AIM at Melanoma

<https://www.aimatmelanoma.org>

For caregivers: <https://www.aimatmelanoma.org/support-resources/caregiving/>

American Cancer Society. Working During Cancer Treatment. Available at <https://www.cancer.org/treatment/survivorship-during-and-after-treatment/staying-active/working-during-and-after-treatment/working-during-cancer-treatment.html>

ASCO® Answers. Advanced Cancer Planning: A Decision-Making Guide for Patients and Families Facing Serious Illness from the American Society of Clinical Oncology. Available at https://www.cancer.net/sites/cancer.net/files/advanced_cancer_care_planning.pdf

Cleveland Clinic. Gamma Knife Surgery. Available at <https://my.clevelandclinic.org/health/treatments/16559-gamma-knife-surgery>

National Cancer Institute. T-cell Transfer Therapy. <https://www.cancer.gov/about-cancer/treatment/types/immunotherapy/t-cell-transfer-therapy>

National Comprehensive Cancer Center Patient and Caregiver Resources. NCCN Guidelines for Patients. Melanoma. 2021. Available at <https://www.nccn.org/patients/guidelines/melanoma>

National Hospice and Palliative Care Organization
<http://nhpco.org/patients-and-caregivers>

IL-2 Treatment Centers

<https://proleukin.com/mm/find-a-treatment-center/>



IN-DEPTH READING FROM THE SCIENTIFIC LITERATURE

Ascierto PA, Dummer R, Gogas HJ, et al. Update on tolerability and overall survival in COLUMBUS: landmark analysis of a randomised phase 3 trial of encorafenib plus binimetinib vs vemurafenib or encorafenib in patients with BRAF V600-mutant melanoma. *Eur J Cancer*. 2020;126:33-44.

Ascierto PA, Long GV, Robert C, et al. (2019). Survival outcomes in patients with previously untreated BRAF wild-type advanced melanoma treated with nivolumab therapy: three-year follow-up of a randomized phase 3 trial. *JAMA Oncol*. 2019;5:187–194.

Ascierto PA, McArthur GA, Dréno B, et al. (2015). coBRIM: a phase 3, double-blind, placebo-controlled study of vemurafenib versus vemurafenib + cobimetinib in previously untreated BRAFV600 mutation–positive patients with unresectable locally advanced or metastatic melanoma (NCT01689519). *J Transl Med*. 2015;13(Suppl 1):O4.

Atkins MB, Lotze MT, Dutcher JP, et al. High-dose recombinant interleukin 2 therapy for patients with metastatic melanoma: analysis of 270 patients treated between 1985 and 1993. *J Clin Oncol*. 1999;17:2105-2116.

Chesney J, Puzanov I, Collichio F, et al. Randomized, open-label phase II study evaluating the efficacy and safety of talimogene laherparepvec in combination with ipilimumab versus ipilimumab alone in patients with advanced, unresectable melanoma. *J Clin Oncol*. 2018;36:1658-1667.

Daud A, Pavlick AC, Ribas A, et al. Extended follow-up results of a phase 1B study (BRIM7) of cobimetinib (C) and vemurafenib (V) in BRAF-mutant melanoma. *J Clin Oncol*, 2016;34(15 suppl):9510.

Dréno B, Ribas A, Larkin J, et al. Incidence, course, and management of toxicities associated with cobimetinib in combination with vemurafenib in the coBRIM study. *Ann Oncol*. 2017;28:1137-1144.

Dummer R, Ascierto PA, Gogas HJ, et al. Overall survival in patients with BRAF-mutant melanoma receiving encorafenib plus binimetinib versus vemurafenib or encorafenib (COLUMBUS): a multicentre, open-label, randomised, phase 3 trial. *Lancet Oncol*. 2018;19:1315-1327.

Dummer R, Flaherty KT, Robert C, et al. 5-year update on COLUMBUS: A randomized phase III trial of encorafenib (enco) + binimetinib (bini) versus enco or vemurafenib (vem) In patients (pts) with BRAF V600-mutant melanoma. Abs 1041MO. Presented at the ESMO Congress 2021, September 20, 2021.

Elias ML, Behbahani S, Maddukuri S, John AM, Schwartz RA, Lambert WC. Prolonged overall survival following metastasectomy in stage IV melanoma. *J Eur Acad Dermatol Venereol*. 2019;33:1719-1725.

Gogas HJ, Flaherty KT, Dummer R, et al. Adverse events associated with encorafenib plus binimetinib in the COLUMBUS study: incidence, course and management. *Eur J Cancer*. 2019;119:97-106.

Gogas HJ, Ribas A, Chesney J. MASTERKEY-265: A phase III, randomized, placebo (Pbo)-controlled study of talimogene laherparepvec (T) plus pembrolizumab (P) for unresectable stage IIIB-IVM1c melanoma (MEL). Abstract 10370. Presented on September 18, 2021. ESMO 2021.

Gutzmer R, Stroyakovskiy D, Gogas H, et al. Atezolizumab, vemurafenib, and cobimetinib as first-line treatment for unresectable advanced BRAFV600 mutation-positive melanoma (IMspire150): primary analysis of the randomised, double-blind, placebo-controlled, phase 3 trial. *Lancet*. 2020;395:1835-1844.

Gutzmer R, Vordermark D, Hassel JC, et al. Melanoma brain metastases - interdisciplinary management recommendations 2020. *Cancer Treat Rev*. 2020;89:102083. doi: 10.1016/j.ctrv.2020.102083.

Hamid O, Robert C, Daud A, et al. Five-year survival outcomes for patients with advanced melanoma treated with pembrolizumab in KEYNOTE-001. *Ann Oncol*. 2019;30:582–588.

Hauschild A, Larkin J, Ribas A, et al. Modeled prognostic subgroups for survival and treatment outcomes in BRAF V600-mutated metastatic melanoma: pooled analysis of 4 randomized clinical trials. *JAMA Oncol.* 2018;4:1382-1388.

Hodi FS, Chiarion-Sileni V, Gonzalez R, et al. Nivolumab plus ipilimumab or nivolumab alone versus ipilimumab alone in advanced melanoma (CheckMate 067): 4-year outcomes of a multicentre, randomised, phase 3 trial. *Lancet Oncol.* 2018;19:1480-1492.

Hodi FS, Corless CL, Giobbie-Hurder A, et al. Imatinib for melanomas harboring mutationally activated or amplified KIT arising on mucosal, acral, and chronically sun-damaged skin. *J Clin Oncol.* 2013;31:3182-3190.

Larkin J, Ascierto PA, Dréno B, et al. (2014). Combined vemurafenib and cobimetinib in BRAF-mutated melanoma. *N Engl J Med.* 2014;371:1867-1876.

Larkin J, Chiarion-Sileni V, Gonzalez R, et al. (2015). Combined nivolumab and ipilimumab or monotherapy in untreated melanoma. *N Engl J Med.* 2015;373:23-34.

Larkin J, Chiarion-Sileni V, Gonzalez R, et al. Five-year survival with combined nivolumab and ipilimumab in advanced melanoma. *N Engl J Med.* 2019;381:1535-1546.

Long GV, Flaherty KT, Stroyakovskiy D, et al. Dabrafenib plus trametinib versus dabrafenib monotherapy in patients with metastatic BRAF V600E/K-mutant melanoma: long-term survival and safety analysis of a phase 3 study. *Ann Oncol.* 2017;28:1631-1639.

Long GV, Stroyakovskiy D, Gogas H, et al. Dabrafenib and trametinib versus dabrafenib and placebo for Val600 BRAF-mutant melanoma: a multicentre, double-blind, phase 3 randomised controlled trial. *Lancet.* 2015;386:444-451.

National Cancer Institute SEER Database Program. Cancer Stat Facts: Melanoma of the Skin. <https://seer.cancer.gov/statfacts/html/melan.html>. Accessed September 7, 2021.

Pavlick AC, Ribas A, Gonzalez R, et al. Extended follow-up results of phase Ib study (BRIM7) of vemurafenib (VEM) with cobimetinib (COBI) in BRAF-mutant melanoma. *J Clin Oncol.* 2015;33(15_suppl):9020.

Ribas A, Daud A, Pavlick AC, et al. Extended 5-year follow-up results of a phase Ib study (BRIM7) of vemurafenib and cobimetinib in BRAF-mutant melanoma. *Clin Cancer Res.* 2020;26:46-53.

Ribas A, Dummer R, Puzanov I, et al. Oncolytic virotherapy promotes intratumoral T cell infiltration and improves anti-PD-1 immunotherapy. *Cell.* 2017;170:1109-1119.e10. doi: 10.1016/j.cell.2017.08.027. Erratum in: *Cell.* 2018 Aug 9;174(4):1031-1032.

Ribas A, Gonzalez R, Pavlick A, et al. Combination of vemurafenib and cobimetinib in patients with advanced BRAF(V600)-mutated melanoma: a phase 1b study. *Lancet Oncol.* 2014;15:954-965. doi: 10.1016/S1470-2045(14)70301-8. Epub 2014 Jul 15. Erratum in: *Lancet Oncol.* 2014;15:417.

Ribas A, Puzanov I, Dummer R, et al. Pembrolizumab versus investigator-choice chemotherapy for ipilimumab-refractory melanoma (KEYNOTE-002): a randomised, controlled, phase 2 trial. *Lancet Oncol.* 2015;16:908-918.

^aRobert C, Karaszewska B, Schachter J, et al. Improved overall survival in melanoma with combined dabrafenib and trametinib. *N Engl J Med.* 2015;372:30-39.

^bRobert C, Schachter J, Long GV, et al. KEYNOTE-006 investigators. Pembrolizumab versus ipilimumab in advanced melanoma. *N Engl J Med.* 2015;372:2521-32.

^aRobert C, Grob JJ, Stroyakovskiy D, et al. Five-year outcomes with dabrafenib plus trametinib in metastatic melanoma. *N Engl J Med.* 2019;381:626-636.

^bRobert C, Ribas A, Schachter J, et al. Pembrolizumab versus ipilimumab in advanced melanoma (KEYNOTE-006): post-hoc 5-year results from an open-label, multicentre, randomised, controlled, phase 3 study. *Lancet Oncol.* 2019;20:1239-1251.

ACKNOWLEDGMENTS

This pamphlet was produced through a collaboration between the AIM at Melanoma Foundation and Terranova Medica, LLC.

We wish to thank our consultant faculty for directing and reviewing the content:

Anna Pavlick, BSN, MSc, DO, MBA

Professor of Medicine, Division of Hematology & Medical Oncology
Weill Cornell Medicine College
New York, New York

Michael A. Postow, MD

Co-Lead, Melanoma Disease Management Team
Memorial Sloan Kettering Cancer Center
Assistant Professor of Medicine
Weill Cornell Medical College
New York, New York

The development of this pamphlet was supported by unrestricted educational grants from Alkermes; Amgen; Bristol Myers Squibb; and Novartis Pharmaceutical Corporation.

ABOUT AIM AT MELANOMA

By directing and funding paradigm-shifting research initiatives; educating patients, healthcare professionals, and the public; and advocating for survivors and their families, AIM at Melanoma's goal is to end this disease in our lifetime while improving the lives of those it affects.

Founded in 2004, AIM at Melanoma is a global foundation dedicated to finding more effective treatments and, ultimately, the cure for melanoma.

AIM at Melanoma is dedicated to:

Innovation in Melanoma Research

We believe that the cure for melanoma will be found more quickly by bringing together leading global researchers and funding their collaborative research. Our paradigm-shifting global research initiatives, including the International Melanoma Tissue Bank Consortium, are poised to reshape the future of melanoma.

Legislation, Policy & Advocacy

We are the respected voice of melanoma across the nation. When drugs are approved, legislation is drafted, and research is assessed, AIM is at the table, speaking loudly and clearly on behalf of patients and their families. We are trusted advisors for government agencies, medical boards, and pharmaceutical companies on critical topics that affect melanoma patients.

Information & Support

Both in the United States and on a global level we provide comprehensive, easy-to-access melanoma resources for patients and health care professionals. AIM's patient, family, and caregiver support offerings—such as our Ask an Expert service, which allows patients to contact a melanoma physician assistant with their questions, and our Peer Connect program, which matches newly diagnosed patients with melanoma veterans—serve as models for other cancer foundations.

APPENDIX: DIAGNOSING AND MONITORING STAGE IV MELANOMA

INTRODUCTION

This section discusses some of the ways in which your oncologist will diagnose and evaluate Stage IV melanoma. Once a patient is diagnosed with Stage IV disease, many of these tests can also be repeated during the monitoring phase.

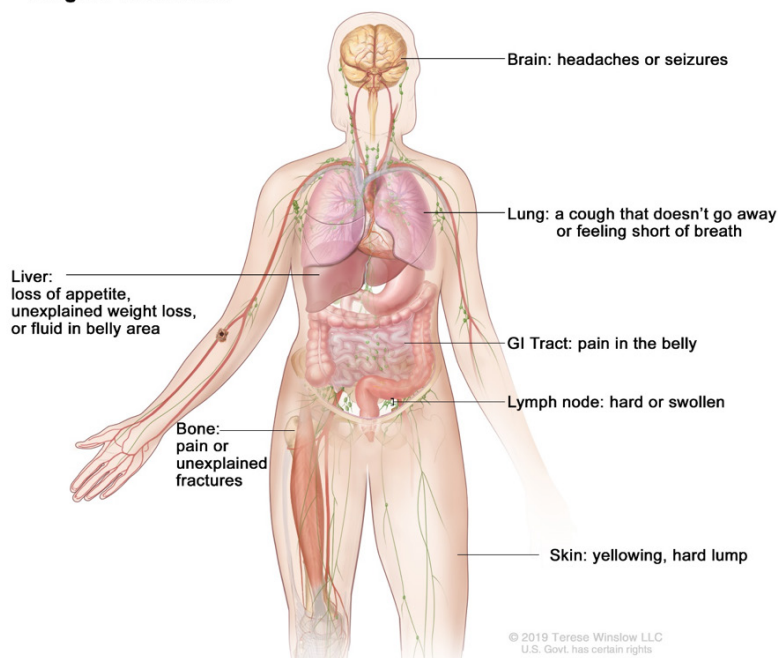
CLINICAL SIGNS OF STAGE IV DISEASE

Stage IV melanoma may be suspected based on imaging tests, or you may have had symptoms that made your healthcare team concerned. These symptoms could include:

- Hard or swollen lymph nodes
- Yellowing of the skin
- Hard lump on the skin
- Fluid buildup in the belly area
- Fatigue
- Stomach pain
- Weight loss

Specific symptoms can be associated with melanoma that has spread to certain regions of the body. For example, difficulty catching your breath or a cough that does not go away may be related to lung metastases. A severe headache or seizures may result from melanoma that has spread to your brain. Therefore, it's important to stay in close communication with your healthcare team about new (and unexplained) symptoms after you have been diagnosed with melanoma, regardless of the stage. Some of these symptoms associated with specific areas of cancer spread are shown in Graphic A.

Stage IV Melanoma



Graphic A: Specific symptoms associated with melanoma that has spread to different regions of the body. Adapted with permission from Terese Winslow.

Beyond clinical assessment, your oncology team will use imaging and a range of pathology tests to determine the extent of cancer and its characteristics.

IMAGING

Imaging involves taking pictures of what is going on inside your body. Imaging tests are very important tools that your oncology team will use to diagnose and monitor Stage IV melanoma. These tests are helpful to look for and evaluate metastases. Here we provide a brief overview of some of these imaging tests.

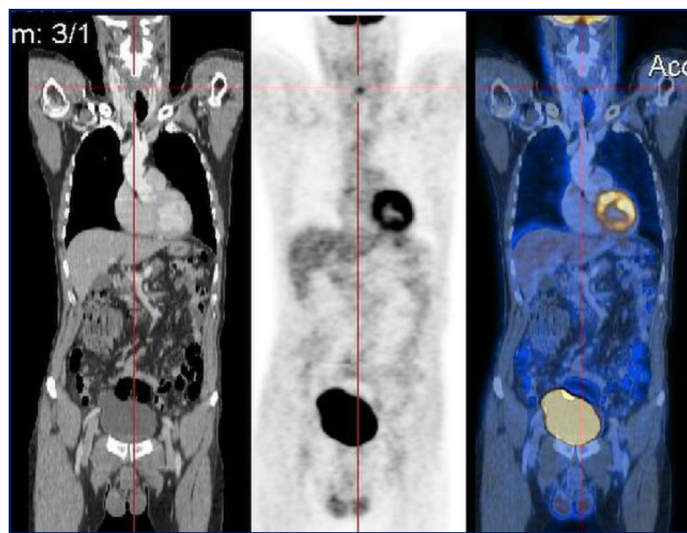
Computed tomography (CT) or computerized axial tomography (CAT) scan is an imaging scanning technique that uses X-rays from different angles to make a 3-dimensional picture of the inside of your body. CT scans can be used with or without a material called contrast. **Contrast materials** are substances that help make certain body areas or structures stand out. This helps make the pictures the radiologist sees easier to interpret. We can think of CT scans as helping us find tumors and figure out their structure.

Positron emission tomography (PET) scan is a test that uses a radioactive drug (a tracer). The tracer is injected into a vein and settles in parts of the body that are using a lot of sugar to grow. We can think of this as testing the function (activity) of cells. An area that “lights up” on a PET scan might be an area that has cancer or an area that is inflamed from arthritis or injury. Because this test might pick up other things that are not cancer, it is often used together with a CT scan as described below.

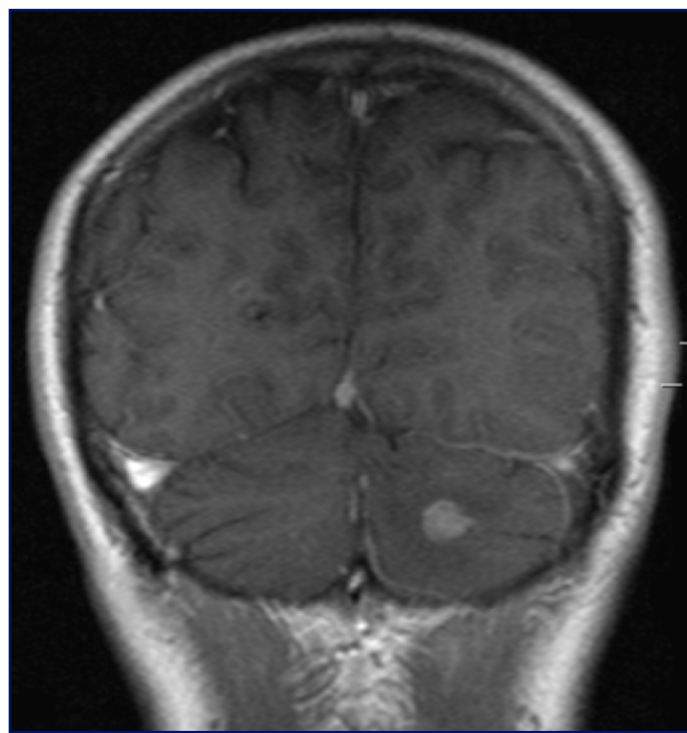


PET/CT is an imaging method that combines CT with PET to provide detailed information about both the structure (CT) and the function (PET) of cells and tissues in the body. The overlaying helps the radiologist be confident that a region of concern is cancer, such as when the CT and PET images line up. An example of a PET/CT overlay is shown in Graphic B.

Magnetic resonance imaging (MRI) is a scanning technique that uses magnets and radio waves to generate images of the organs in the body (see Graphic C). It does not use X-rays. Sometimes the test is used with contrast. Other times it is not. MRI is the best test for imaging the brain. **Because melanoma often spreads to the brain, all patients with Stage IV melanoma should have an MRI of the brain, if possible.** However, some people cannot receive MRI tests because of metals in their bodies or for other reasons. These people should then get a CT of the brain if needed. MRI can also be used to image other areas of the body where there are soft tissues to be evaluated. There is no radiation associated with an MRI test.



Graphic B. CT (left most panel), PET scan (center panel), and PET/CT (right panel) showing the overlay results. Reproduced from Wikimedia Commons, courtesy of Creative Commons Attribution.



Graphic C. Brain MRI showing metastases (white areas). Reproduced from Wikimedia Commons, courtesy of Creative Commons Attribution.

BIOPSY

If your imaging or clinical examination suggests you have Stage IV melanoma, a biopsy will most likely be used to confirm it. The biopsy can also be used to obtain tissue for further analysis by a pathologist. The types of biopsies that may be undertaken are discussed below.

Skin biopsy: If you have a suspected metastases far from your primary, you will undergo a skin biopsy. This involves cutting the spot or lump out and sending it to the laboratory to be tested.

Fine needle biopsy: This is where the doctor uses a thin, hollow needle to remove a small piece of tissue to see if the cancer is there. It is often used to evaluate lymph nodes or other structures. A local anesthetic is sometimes used to numb the area. If you need to check a structure away from the body surface, such as liver or lung, an imaging test such as an **ultrasound** (imaging test using sound waves) or CT scan can be used to guide the needle into place.

Core-needle biopsy: This biopsy uses a needle that has a wider diameter than a fine-needle biopsy. This type of biopsy is typically used to sample larger tumors. With this procedure, the doctor removes a small cylinder of tissue (maybe 1/16 inch in diameter and a half inch long).

Excisional or incisional biopsy: In this type of biopsy, the entire tumor (**excisional** biopsy) or a small part of a large tumor (**incisional** biopsy) are removed. This type of biopsy often can be performed using local or regional anesthesia. However, if the tumor is inside the chest or abdomen (belly) it might require **general anesthesia**, which means drugs that put you into a deep sleep.

Lymph node excisional biopsy (surgical removal): In this biopsy technique, an entire enlarged lymph node is removed. It's sometimes used when the lymph node's large size suggest that the melanoma has taken over the whole lymph node.

Endoscopic biopsy: This is a procedure in which the doctor uses a thick flexible lighted tube (an **endoscope**) to look inside different parts of the body. The endoscope can then be used to sample tissue that might be cancer. This type of biopsy might be used to obtain a sample from your esophagus, lungs, or intestines.

Laparoscopic, thoracoscopic, and mediastinoscopy biopsies: These types of biopsies are used to reach areas that an endoscope can't reach. For these types of biopsies, the surgeon cuts into the region and then passes a tube to look inside and take a biopsy. The term before the scope explains what part of the body is being sampled (e.g., thoracoscopic biopsy is taken from the thorax).